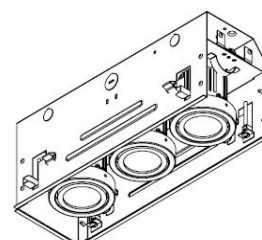
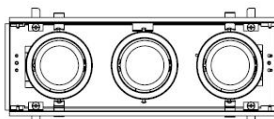
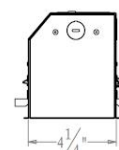
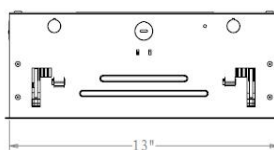


# Trim or Trimless Residential Mini Multiple Downlight

Catalog #		Prepared by	LiteHarbor
Project		Date	
Notes			



## ORDER MATRIX | Example: G4013-E-R-GU10

**A**      **B**      **C**      **D**

A	Series
G4011-E-R-GU10	1-Lamp
G4012-E-R-GU10	2-Lamp
G4013-E-R-GU10	3-Lamp
G4014-E-R-GU10	4-Lamp

B	Input Voltage
U	85-265V AC

C	Available Chips
Cree	Cree
Citizen	Citizen
Epistar	Epistar
Seoul	Seoul
Osram	Osram

### Description

Mini LED Multiple Spots for remodeling and new construction applications for residential and commercial environments. The Multiple Spots are marketed as complete units including the housing and trim. Available as one, two and three-light configurations, each spot is individually adjustable and provides a 30-degree visual cutoff for glare control.

### Features

Individually adjustable luminaries  
Complete unit includes housing & trim  
All housing can be made into Non-IC or IC Rated (ETL listed for IC Rated)  
30° vertical tilt, 360° horizontal rotation

### Construction

Trim and housing are constructed of Gauge Steel.

### Mounting

Available in 12.7mm-38.1mm thick ceilings  
Fix the lamp by locking screw From below the ceiling  
When Installing or removing the fixture, it won't damage the ceilings



**Liteharbor Lighting Technology Co., Ltd.**  
New Industry Area Hecun Danzao Town  
Nanhai Foshan City Guangdong China

TEL: +86-757-8180 8675  
FAX: +86-757-8180 8685  
E-mail: info@liteharbor.com

Website: www.liteharbor.com  
Specifications subject to change w/o notice  
Revision: Jan. 2015



MULTIPLE DOWNLIGHT

D	Color Temperature
28K	2800K
30K	3000K
35K	3500K
41K	4100K
60K	6000K

### Light Source

High output GU10 LED

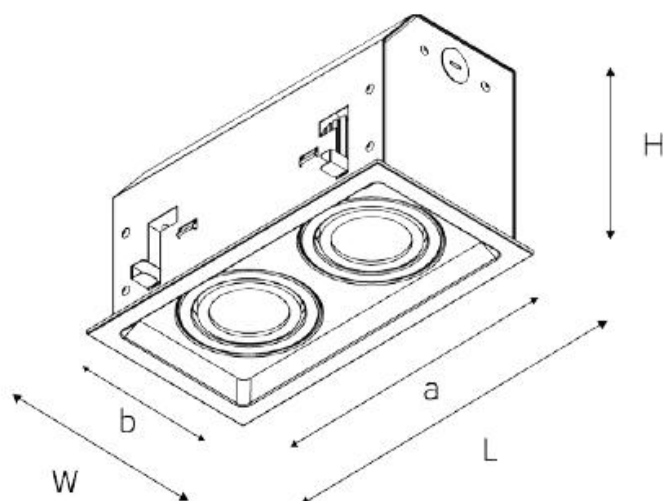
### Dimming

Dimmable to 10% with most brand dimmers.

Input Voltage	AC 85-265V 50/60Hz
Rated Power	8W/Lamp
Luminous Efficiency	70 LM/W
Lamp	GU10
Socket	GU10
Color Temperature	2800-6000K
Material	Gauge Steel
CRI	Ra>80



### Size



#### 1x1 SPOTS

L: 5"xW: 5"xH: 5"

Cut-Out(axb): 4 1/4" x 4 1/4"

#### 1x2 SPOTS

L: 9 5/16"xW: 5"xH: 5"

Cut-Out(axb): 8 3/4" x 4 1/4"

#### 1x3 SPOTS

L: 13 3/4"xW: 5"xH: 5"

Cut-Out(axb): 13" x 4 1/4"

#### 1x4 SPOTS

L: 17 7/8"xW: 5"xH: 5"

Cut-Out(axb): 17 7/16" x 4 1/4"

MULTIPLE DOWNLIGHT



**Liteharbor Lighting Technology Co., Ltd.**

New Industry Area Hecun Danzao Town  
Nanhai Foshan City Guangdong China

TEL: +86-757-8180 8675

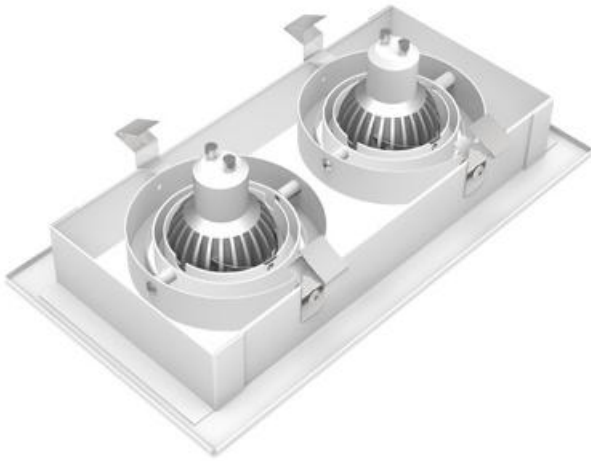
FAX: +86-757-8180 8685

E-mail: [info@liteharbor.com](mailto:info@liteharbor.com)

Website: [www.liteharbor.com](http://www.liteharbor.com)

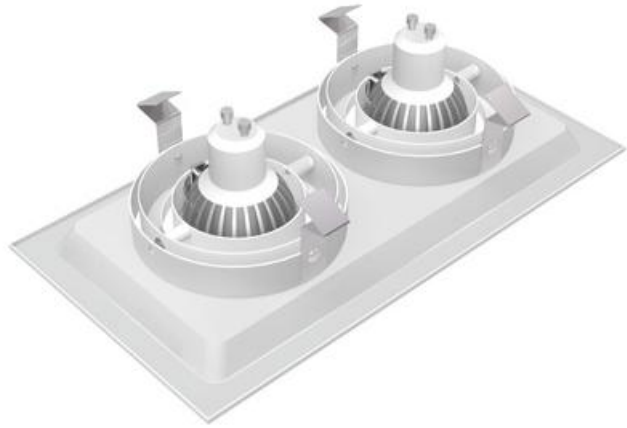
Specifications subject to change w/o notice

Revision: Jan. 2015



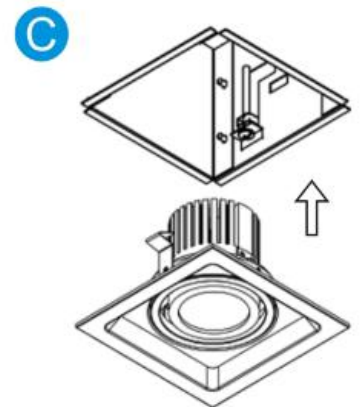
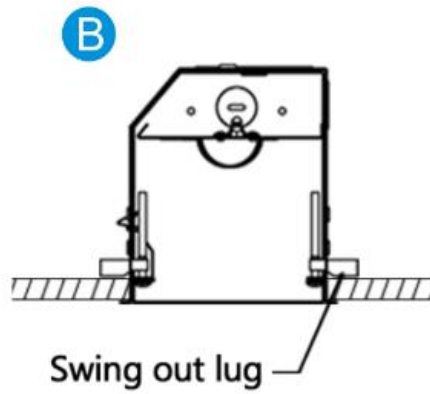
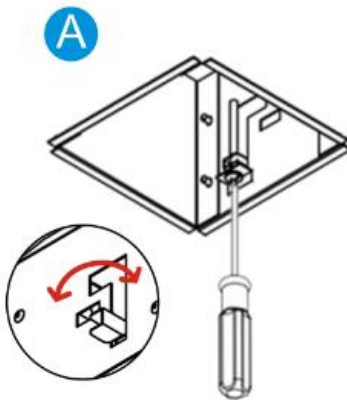
### Option 1

Universal hollow open flanged design  
Strong welding make a stable structure



### Option 2

Special closed flanged design without seeing the body inside  
One forming without welding spot make a better effect overall



MULTIPLE DOWNLIGHT

## INSTALLATION INSTRUCTION