



LED TRACK LIGHT & ACCESSORIES

Liteharbor Lighting can provide low voltage/line voltage LED track light and track lighting accessories to meet any number of needs. We have components to build on or add to any existing track systems, and you can find a variety of top-of-the line track lights and the accessories at here.

Model: K1003

Low Volt. Gimbal Track Light
Complete with 12V 8W LED Driver

Lamp: LED MR16 12V 8W Max. GU5.3 Base
Finish: White/ Black/ Satin Nickel



Model: K1013

Low Volt. Track Light
Complete with 12V 8W LED Driver

Lamp: LED MR16 12V 8W Max. GU5.3 Base
Finish: White/ Black/ Satin Nickel



Model: K1023

Low Volt. Mesh Shade Track Light
Complete with 12V 8W LED Driver

Lamp: LED MR16 12V 8W Max. GU5.3 Base
Finish: White/ Black/ Satin Nickel



Model: K1063

Low Voltage Cylinder Track Light
Complete with 12V 8W LED Driver

Lamp: LED MR16 12V 8W Max. GU5.3 Base
Finish: White/ Black/ Satin Nickel



Model: K1103

Low Volt. Square Track Light
Complete with 12V 8W LED Driver

Lamp: LED MR16 12V 8W Max. GU5.3 Base
Finish: White/ Black/ Satin Nickel



Model: K1113

Low Volt. Octagon Track Light
Complete with 12V 8W LED Driver

Lamp: LED MR16 12V 8W Max. GU5.3 Base
Finish: White/ Black/ Satin Nickel





Model: K1523

Low Volt. Swivel Track Light
Complete with 12V 8W LED Driver

Lamp: LED MR16 12V 8W Max. GU5.3 Base
Finish: White/ Black/ Satin Nickel



Model: FM1523

Low Volt. Ceiling Mounted Track Light

Lamp: LED MR16 GU5.3 8W Max.
Finish: White/ Black/ Satin Nickel



Model: K2033

Line Volt. Gimbal Track Light

Lamp: LED PAR20 10W Max. E26 Base
Finish: White/ Black/ Satin Nickel



Model: K2043

Line Volt. Gimbal Track Light

Lamp: LED PAR30 18W Max. E26 Base
Finish: White/ Black/ Satin Nickel



Model: K2053

Line Volt. Gimbal Track Light

Lamp: LED PAR38 24W Max. E26 Base
Finish: White/ Black/ Satin Nickel



LOW VOLTAGE/ LINE VOLTAGE

Model: K2063

Line Volt. Mini Cylinder Track Light

Lamp: LED GU10 8W Max. GU10 Base
LED PAR16 8W Max. E26 Base
Finish: White/ Black/ Satin Nickel



Model: K2103

Line Volt. Square Track Light

Lamp: LED GU10 8W Max. GU10 Base
LED PAR16 8W Max. E26 Base
Finish: White/ Black/ Satin Nickel



Model: K2103-4C

Line Volt. Square Track Light 4 Heads

Lamp: LED GU10 8W/Lamp Max. GU10 Base
LED PAR16 8W/Lamp Max. E26 Base
Finish: White/ Black/ Satin Nickel



Model: K2013

Line Volt. Gimbal Track Light

Lamp: LED PAR20 10W Max. E26 Base
Finish: White/ Black/ Satin Nickel



Model: K2023

Line Volt. Adjustable Track Light

Lamp: LED PAR20 10W Max. E26 Base
LED PAR30 18W Max. E26 Base
LED PAR38 24W Max. E26 Base
Finish: White/ Black/ Satin Nickel



Model: K2113

Line Volt. Octagon Track Light

Lamp: LED GU10 8W Max. GU10 Base
LED PAR16 8W Max. E26 Base
Finish: White/ Black/ Satin Nickel



Model: K2203-XC

Line Volt. Canopy Mounted Mini Track Light

Lamp: LED GU10 8W/Lamp Max.
Finish: White/ Black/ Satin Nickel



Model: K2503

Line Volt. Bullet Track Light

Lamp: LED GU10 8W Max. GU10 Base
Finish: White/ Black/ Satin Nickel



Model: K2553

Line Volt. Round Back Track Light

Lamp: LED PAR20 10W Max. E26 Base
Finish: White/ Black**Model: K2553-4C**

Line Voltage Round Back Track Light 4 Heads

Lamp: LED PAR20 E26 10W/Lamp Max.
Finish: White/ Black/ Satin Nickel**Model: K2563**

Line Volt. Round Back Track Light

Lamp: LED PAR30 18W Max. E26 Base
Finish: White/ Black**Model: K2663**

Aluminum Die-casting Track Light

Lamp: LED PAR20 10W Max. E26 Base
Finish: White/ Black/ Satin Nickel**Model: K2663-4C**

Line Voltage Track Light 4 Heads

Lamp: LED PAR20 E26 10W/Lamp Max.
Finish: White/ Black/ Satin Nickel**Model: K2663-6C**

Aluminum Die-casting Track Light

Lamp: LED PAR20 10W/Lamp Max. E26 Base
Bar length: 72 inches
Finish: White/ Black/ Satin Nickel
Available Wall Mount and Ceiling Mount**Model: K2573**

Line Volt. Round Back Track Light

Lamp: LED PAR38 24W Max. E26 Base
Finish: White/ Black**Model: K2583**

Line Volt. Step Cylinder Track Light

Lamp: LED PAR20 10W Max. E26 Base
Finish: White/ Black**Model: K2593**

Line Volt. Step Cylinder Track Light

Lamp: LED PAR30 18W Max. E26 Base
Finish: White/ Black**Model: K2673**

Aluminum Die-casting Track Light

Lamp: LED GU10 8W Max. GU10 Base
LED PAR16 8W Max. E26 Base
Finish: White/ Black/ Satin Nickel**Model: K2683**

Line Volt. Bullet Track Lighting

Lamp: LED GU10 8W Max. GU10 Base
LED PAR16 8W Max. E26 Base
Finish: White/ Black/ Satin Nickel**Model: K2603**

Line Volt. Step Cylinder Track Light

Lamp: LED PAR38 24W Max. E26 Base
Finish: White/ Black**Model: K2643**

Line Volt. Swivel Track Light

Lamp: LED PAR20 10W Max. E26 Base
Finish: White/ Black/ Satin Nickel**Model: K2653**

Line Volt. Mini Swivel Track Light

Lamp: LED PAR20 10W Max. E26 Base
LED PAR30 18W Max. E26 Base
LED PAR38 24W Max. E26 Base
Finish: White/ Black**Model: K3003**

HID Metal Halide Track Light

120V electronic ballast standard
Lamp: 39W/ 70W PAR30MH HID Metal Halide
Finish: White/ Black/ Satin Nickel**Model: K3013**

HID Metal Halide Track Light

120V electronic ballast standard
Lamp: PAR38MH 100W Max. HID Metal Halide
Finish: White/ Black/ Satin Nickel

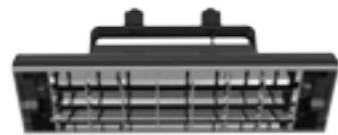
Model: K4003
Flood Wall Wash Track Light

Die-cast construction, specular parabolic louver
120V standard electronic ballast
Lamp: 26W DTT
32/42W TRT
LED 18W Max.
Finish: White/ Black/ Satin Nickel



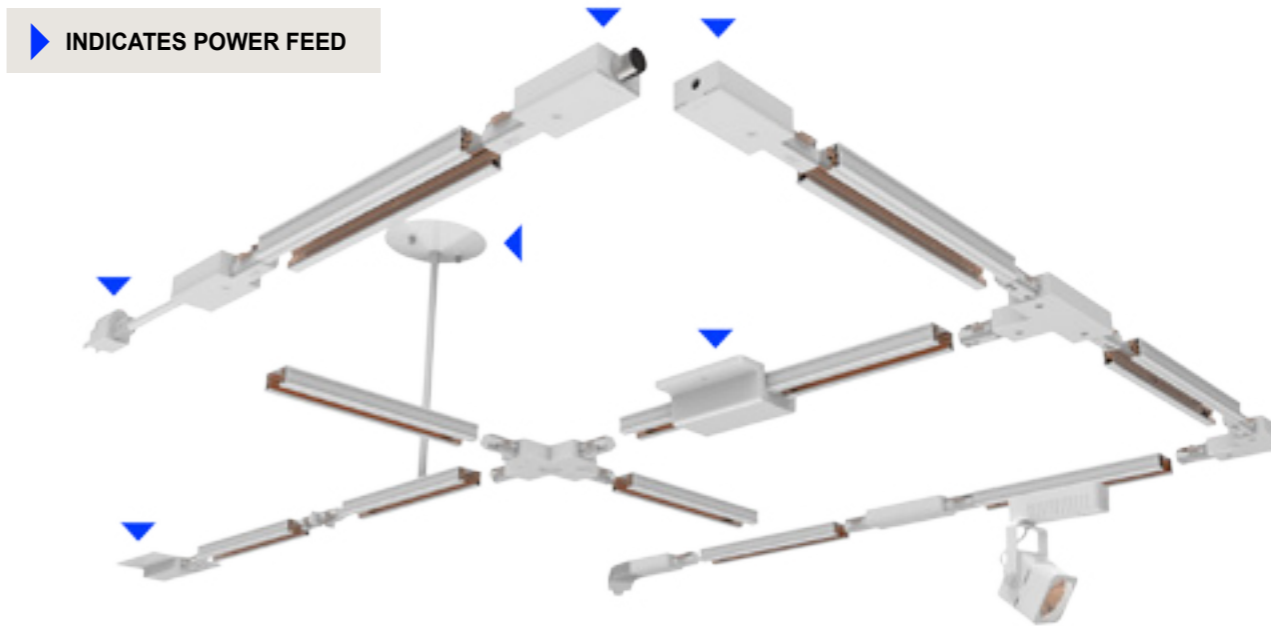
Model: K4013
Flood Wall Wash Track Light

Specular parabolic louver
120V standard electronic ballast
Lamp: 2x40W TRT
LED 2x18W Max.
Finish: White/ Black/ Satin Nickel



Model: K4023
Flood Wall Wash Track Light

Specular parabolic louver
120V standard electronic ballast
Lamp: 2x32W/42W TRT
LED 2x18W Max.
Finish: White/ Black/ Satin Nickel



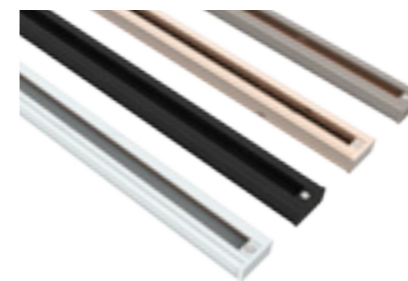
Model: KL0010
360 Degree Rotation Track light
Finish: White/ Black/ Silver/ Satin Nickel
Lamp: LED AR111
1300LM@18W
1990LM@22.5W
4000LM@33.8W
Narrow beam angles, 24° and 40°



Model: KL0011
Twin Light Track Light
Finish: White/ Black/ Silver/ Satin Nickel
Lamp: LED AR111
1300LM@18W per lamp
1990LM@22.5W per lamp
4000LM@33.8W per lamp
Narrow beam angles, 24° and 40°



Model: PR058-AR111-JC-CE
Four Barn Doors AR111 Track Light
Finish: White/ Black/ Silver/ Satin Nickel
Lamp: LED AR111
1300LM@18W
1990LM@22.5W
4000LM@33.8W
Narrow beam angles, 24° and 40°



Model: K5-3
Single Circuit / Two Circuit Track

Single/ Two Circuit Track is available in white, black, and satin nickel finishes, and in 4, 6, and 8-foot sizes, and can also be field cut to your preference.



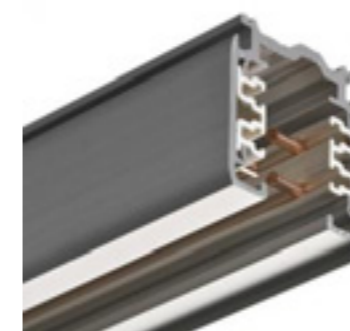
Model: PR058-AR111-J-CE
Surface Mounted Four Barn Doors AR111 Track Light
Finish: White/ Black/ Silver/ Satin Nickel
Lamp: LED AR111
1300LM@18W
1990LM@22.5W
4000LM@33.8W
Narrow beam angles, 24° and 40°



PR058-PAR30-H
Four Barn Doors PAR30 Track Light
Finish: White/ Black/ Silver/ Satin Nickel
Lamp: LED PAR30
1440LM@18W



PR058-AR70-100-CE
Four Barn Doors AR70 Track Light
Finish: White/ Black/ Silver/ Satin Nickel
Lamp: LED AR70
800LM@10W



Model: K5-4
Two-Circuit/Two-Neutral Track

Available in 4ft, 8ft, and 12ft lengths; can be field cut to desired length
Low profile, easy and flexible; ideal for dimming intensive applications
Superior dimming capability gives the ability to dim on two independent circuits without harmonics or interference on the neutral conductor



Model: K5-5
Single Circuit / Two Circuit Recessed Track

Available in 4ft and 8ft lengths
Use with 4ft and 8ft lengths of Single or Two-Circuit Track
Spacers are supplied to adjust for thickness of single or 2-circuit track
Finishes: White Enamel



Model: K500

Global Adaptor
Finish: WH/ BK

**Model: K501**

Pendant Fixture Adaptor: Cord
Finish: WH/BK

**Model: K502**

Square Adaptor
Finish: WH/BK

**Model: K608**

Mini Coupling
Finish: WH/ BK

**Model: K609**

Single / Two Circuit T-Connector
Finish: WH/ BK

**Model: K610**

Single Circuit 90° Connector
Finish: WH/ BK

**Model: K503**

Double-head Flexible Square Track Adaptor
Finish: WH/BK

**Model: K600**

Single / Two Circuit Live End
Finish: WH/ BK

**Model: K601**

Single / Two Circuit Conduit End Feed
Finish: WH/ BK

**Model: K611**

Single / Two Circuit X-Connector
Finish: WH/ BK

**Model: K612**

Live End with Cord&Plug
Finish: WH/ BK
Available in 2 wire, 3 wire, 4 wire

**Model: K613**

Barn Doors
Finish: WH/BK

**Model: K602**

Single / Two Circuit Flexible Connector
Finish: WH/ BK

**Model: K603**

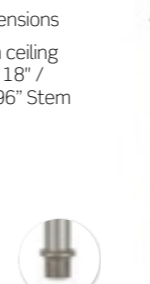
2-Circuit Floating Feed Kit
- Can be installed anywhere along track
- Finishes: Black/ White/ Silver

**Model: K604**

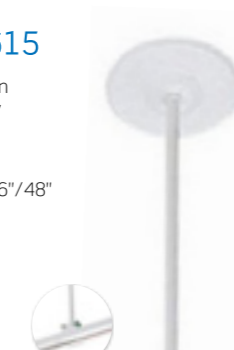
T-bar Attachment Clips For T-bar Drop Ceiling
Finish: WH/ BK/ SN

**Model: K614**

Suspension Kit Extensions
Extends track from ceiling
Available with 12"/ 18" /
24"/36"/48"/72"/96" Stem

**Model: K615**

Track Suspension
Kits with Canopy
Finish: WH/BK
Available in
12"/ 18" /24"/36"/48"

**Model: K616**

Sloped Ceiling Adaptor
Use with suspension
kits to accommodate
sloped ceilings
Finish: WH/BK

**Model: K605**

Single / Two Circuit Floating Canopy
Finish: WH/ BK

**Model: K606**

Single / Two Circuit Live End with Box Cover
Finish: WH/ BK

**Model: K607**

Track End Cap
Finish: WH/ BK

