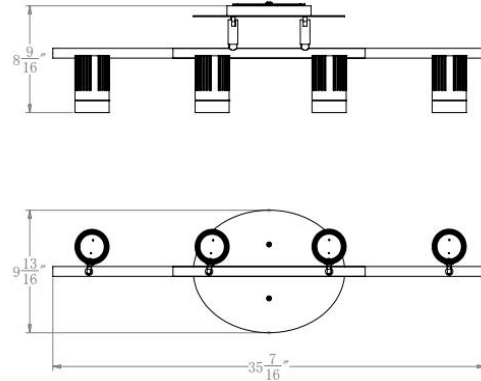
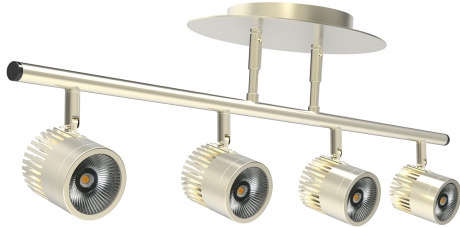


**K3033-4C**  
**Line Volt. Die-casting Track Head**

<b>Catalog #</b>		<b>Prepared by</b>	LiteHarbor
<b>Project</b>		<b>Date</b>	
<b>Notes</b>			



**ORDER MATRIX | Example:K3033-4C**

<u>A</u>	<u>B</u>	<u>C</u>	<u>D</u>	<u>E</u>	<u>F</u>	<u>G</u>
A	Series					
K3033-4C	COB Track Light					
B	Finish					
WH	White					
BK	Black					
SV	Silver					
SN	Satin Nickel					
C	Power Supply					
ND120	Non-Dimming 120V					
ND277	Non-Dimming 277V					
D120	0-10V Dimming 120V					
D277	0-10V Dimming 277V					
D	LED Available					
Philips	Philips					
Cree	Cree					
Epistar	Epistar					
Seoul	Seoul					
Osram	Osram					

**LED Light Engine**

Color Temperature 2700K-6000K  
 CRI 80+  
 3 Step MacAdam(3 SDMC)  
 Passive aluminum heat sink  
 50,000 hrs average rated life

**Electrical System**

120V/277 50/60Hz input  
 Over voltage, over current and short circuit protection:  
 Auto recovery  
 MTBF > 100,000 hours

**Optics**

16° Spot, 24° Narrow Flood, 32° Flood, 50° Wide Flood

**Dimming**

Track Dimming  
 — (ELV) reverse phase control dimmers. 120V only.  
 — Dimmable 100-10%  
 Canopy Dimming  
 — ELV Dimming 120V  
 — 0-10V Dimming 120V or 277V



TRACK LIGHTING



**Liteharbor Lighting Technology Co., Ltd.**

New Industry Area Hecun Danzao Town  
 Nanhai Foshan City Guangdong China

TEL: +86-757-8180 8675

FAX: +86-757-8180 8685

E-mail: info@liteharbor.com

Website: www.liteharbor.com

Specifications subject to change w/o notice

Revision: Jan. 2015

E	Watt/Lumen
30/LAMP	30W / 2250LM Per Lamp
32/Lamp	32W / 2720LM Per Lamp

F	Color Temperature
27K	2700K
30K	3000K
40K	4000K
50K	5000K
60K	6000K

G	Beam Spread
16°	16° Spot
24°	24° Narrow Flood
32°	32° Flood
50°	50° Flood

### Compatibility

Track luminaire is designed for use with the following track systems:

- Single Circuit/Single Neutral 120V
- Two Circuit/Single Neutral 120V
- Two Circuit/Two Neutral 120V
- Two Circuit/Two Neutral 277V

### Mounting

Mounts to a standard 4" square or octagon junction box

### Listing & Warranty:

ETL Listed to US and Canadian standards for dry locations  
5-Year Limited Warranty



**Liteharbor Lighting Technology Co., Ltd.**

New Industry Area Hecun Danzao Town  
Nanhai Foshan City Guangdong China

TEL: +86-757-8180 8675

FAX: +86-757-8180 8685

E-mail: [info@liteharbor.com](mailto:info@liteharbor.com)

Website: [www.liteharbor.com](http://www.liteharbor.com)

Specifications subject to change w/o notice

Revision: Jan. 2015

## OPTIONAL ACCESSORIES



**K500**  
Global Adaptor  
Finish: WH/BK



**K600**  
Single/Two Circuit Live End  
Finish: WH/BK



**K601**  
Single /Two Circuit End Feed  
Finish: WH/BK



**K602**  
Single/Two Circuit Flexible Connector  
Finish: WH/BK



**K604**  
T-bar Attachment Clips For T-bar Drop Ceiling  
Finish: WH/BK/SN



**K605**  
Single/Two Circuit Floating Canopy  
Finish: WH/BK



**K606**  
Single/Two Circuit Live End With Box Cover  
Finish: WH/BK



**K607**  
Track End Cap  
Finish: WH/BK



**K608**  
Mini Coupling  
Finish: WH/BK



**K609**  
Single/Two Circuit T-Connector  
Finish: WH/BK



**K610**  
Single Circuit 90° Connector  
Finish: WH/BK



**K611**  
Single/Two Circuit X-Connector  
Finish: WH/BK



**K612**  
Live End With Cord&Plug  
Finish: WH/BK  
Available in 2 wire,3 wire,4 wire



**K5-3**  
Single Circuit/Two Circuit Track  
Single circuit track is rated for 2400W  
features 12-gauge copper conductors and

a separate ground conductor.  
Two circuit track includes 12-gauge copper  
conductors and features a double load  
capacity at 4800W max.  
Single/Two Circuit Track is available in  
white,black,and satin nickel finishes,and  
in 4,6,and 8-foot sizes,and can also be  
field cut to your preference.



**Liteharbor Lighting Technology Co., Ltd.**  
New Industry Area Hecun Danzao Town  
Nanhai Foshan City Guangdong China

TEL: +86-757-8180 8675  
FAX: +86-757-8180 8685  
E-mail: info@liteharbor.com

Website: www.liteharbor.com  
Specifications subject to change w/o notice  
Revision: Jan. 2015

