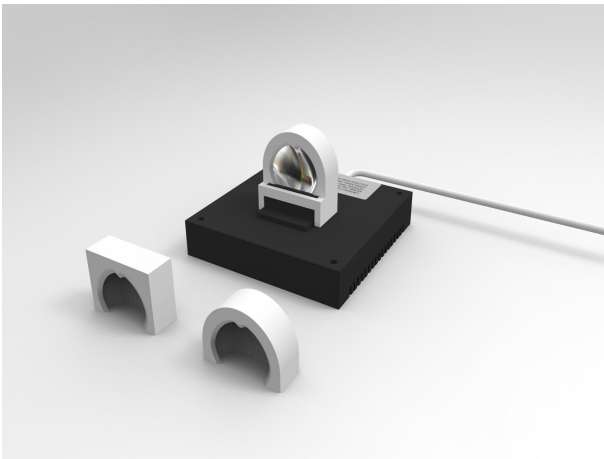


X-Light III LED Wall Washer Mini Spotlight

Catalog #		Prepared by LiteHarbor	
Project		Date	
Notes			



X-Light III Series LED Mini Spotlight

 DIMMING	120v-277v Input Voltage	80/90 LED CRI	16 W/lamp Wattage	1400 Lm/lamp Luminous flux	2700K 3000K 3500K 4000K CCT
---	----------------------------	------------------	-------------------------	----------------------------------	---

Description

X-Light III series recessed downlight offers small aperture lighting without compromise and embraces a spoon-reflector that sits invisibly in a semi-recessed square. Specification grade fixed parts come in half-round or square, CCT's and CRI options. Curated for discreet, yet impressive projection. X-Light III's design flawlessly illuminate walls and works of art. It features a highly configurable single point source LED package and is capable of delivering up to 1500 lumens.

Electrical Specifications

- 16W Power consumption.
- The input voltage of each lamp is 42V/24V, the load termin can be used independently.
- Hard anodized aircraft grade aluminum heat sink.
- Operating Temperature:-10°C-50°C Light output.

Listing / Warranty

- ETL listed to US and Canadian standards for damp location.
- 5 Year Limited Warranty.

Features

- X-Light III with square and half-round fixed parts.
- Use big brand COB light source with high luminous efficiency and long service life (50000 hours).
- Professional light distribution devices, no glare, perfect control light, spot even transition.

Lamp Body

- 1500lm source light output.
- The anti-pull device is hidden inside the lamp body.
- Color rendering index 90.
- High performance big brand LED at various color temperatures available.

Installation Types&Applications

- Wall-washing .
- Can be installed in drywall, wood, stone, and metal ceilings.
- Apply to residential, offices, hotels, shopping mall stores, receptions, corridors,exhibition center, galleries etc.

*Other special requirements please contact with our sales.



Liteharbor Lighting Technology Co., Lt
New Industry Area Hecun Danzao Town
Nanhai Foshan City Guangdong China

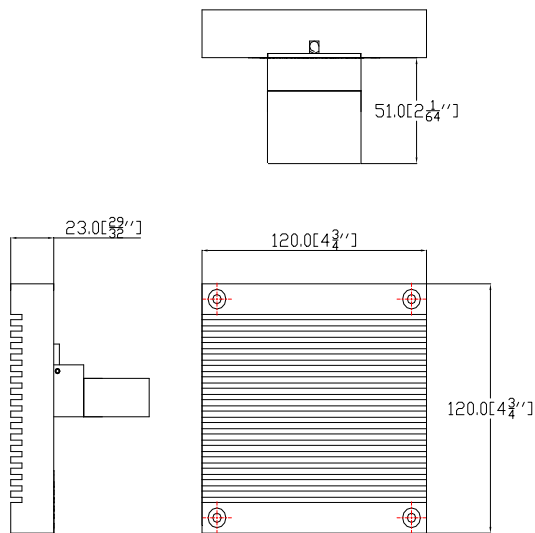
TEL: +86-757-8180 8687
FAX: +86-757-8180 8685
E-mail: info@liteharbor.com

Website: www.liteharbor.com
Specifications subject to change w/o notice
Revision: Mar. 2022



LED MINI SPOTLIGHT

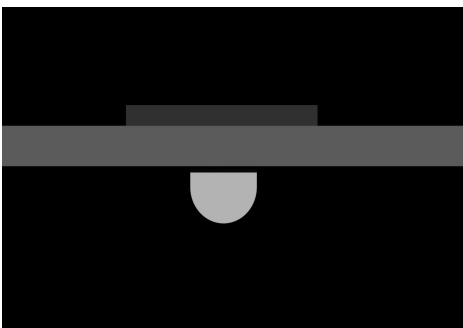
Dimensions



Square



Half-round



Light Output

Wattage	16W Max./lamp
Input Voltage	42V/24V
CCT	3000K/4000K/5000K/6500K
CRI	80+/90+
Luminous flux	1000lm/lamp
Light source	COB
Beam Angle	45°
Life span	50000Hours

Power Supply

Wattage	120W Max .
Input Voltage	120-277V AC
Frequency	50/60 Hz
Output Voltage	42V/24V
Electric current	3.4A Max .
Power Factor	>0.9
Dimming	0-10V Dimming

Mounting And Maintenance

- Wall-washing and Vertical illumination.
- Wide range of applications, it can be installed .
in different ceiling thickness, is the real universal type
downlight.
- The subsequent decoration is also convenient and quick.



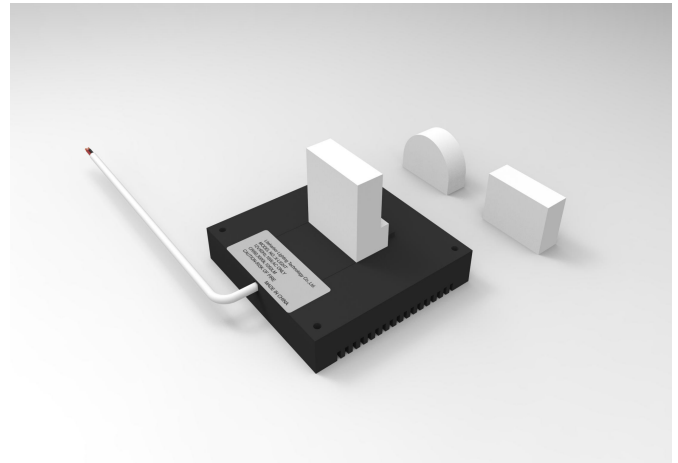
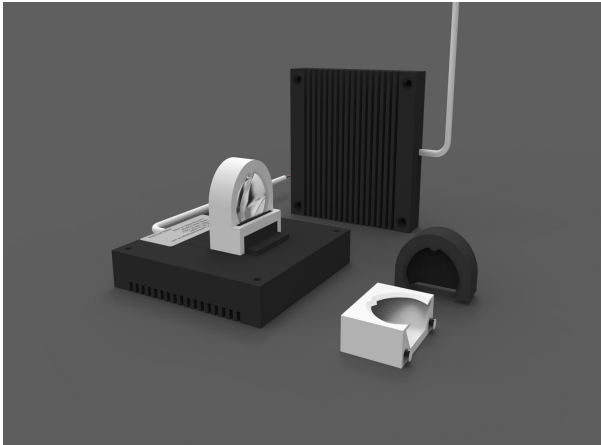
*Other special requirements please contact with our sales.



Liteharbor Lighting Technology Co., Lt
New Industry Area Hecun Danzao Town
Nanhai Foshan City Guangdong China

TEL: +86-757-8180 8687
FAX: +86-757-8180 8685
E-mail: info@liteharbor.com

Website: www.liteharbor.com
Specifications subject to change w/o notice
Revision: Mar. 2022

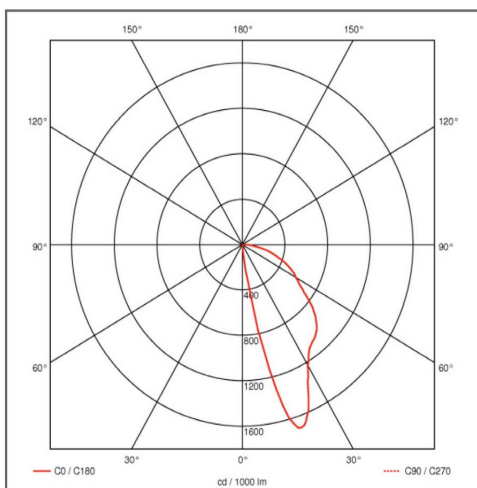


Ordering Guide

Series <input type="checkbox"/> X-light I <input type="checkbox"/> X-light II <input type="checkbox"/> X-light III	Installation Types <input type="checkbox"/> Wall Washer <input type="checkbox"/> Vertical illumination	Input Voltage <input type="checkbox"/> 120v-277V	Wattage <input type="checkbox"/> 16W/lamp	Shape <input type="checkbox"/> Square <input type="checkbox"/> Half-round
Dimmable <input type="checkbox"/> 0-10V dimming	Color Temperature <input type="checkbox"/> 3000K <input type="checkbox"/> 4000K <input type="checkbox"/> 5000K <input type="checkbox"/> 6500K	Light Source <input type="checkbox"/> CREE <input type="checkbox"/> Citizen <input type="checkbox"/> Epistar <input type="checkbox"/> Seoul <input type="checkbox"/> Osram	CRI <input type="checkbox"/> 80+ <input type="checkbox"/> 90+	

LED MINI SPOTLIGHT

Light Distribution



*Other special requirements please contact with our sales.



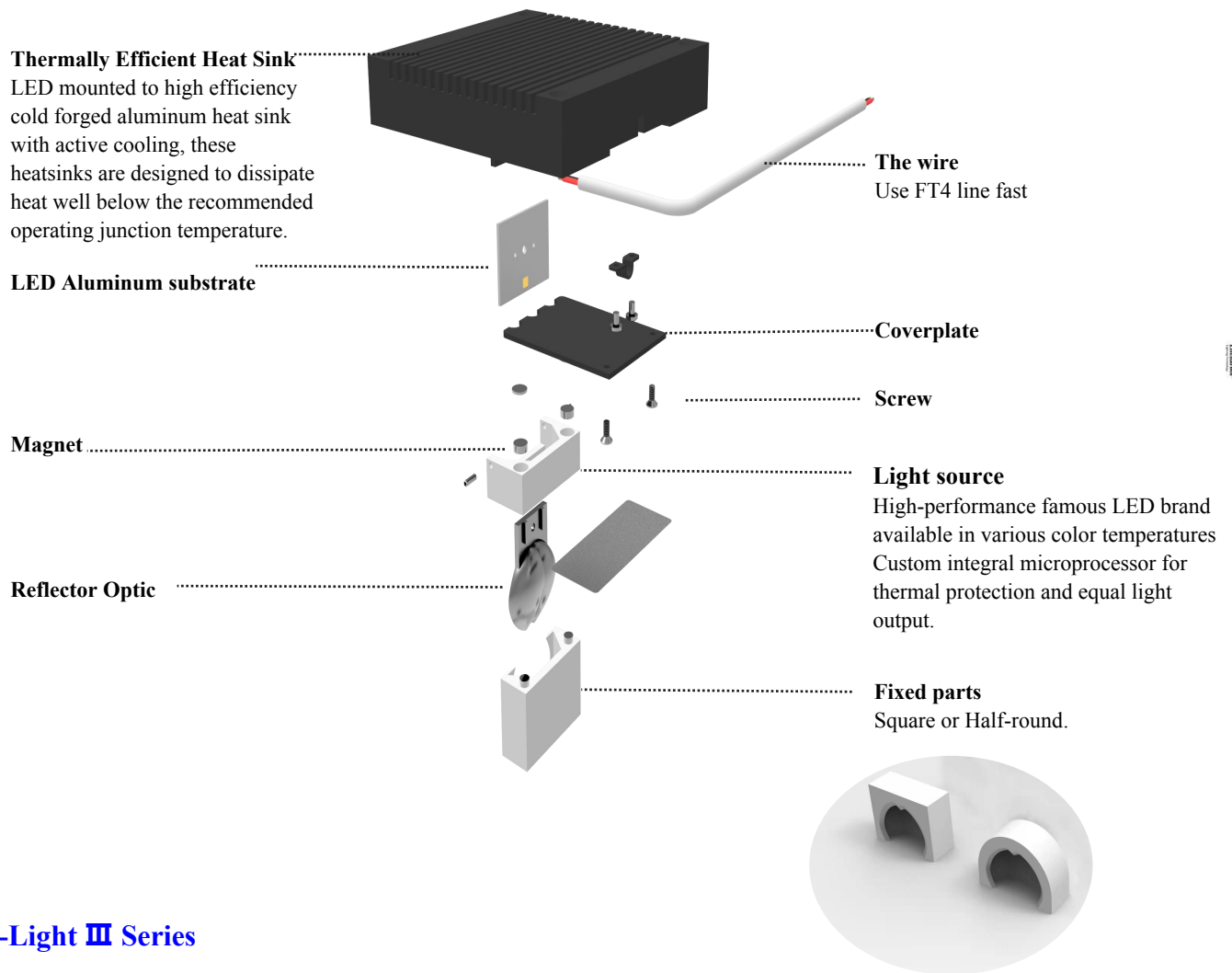
Liteharbor Lighting Technology Co., Ltd.
 New Industry Area Hecun Danzao Town
 Nanhai Foshan City Guangdong China

TEL: +86-757-8180 8687
 FAX: +86-757-8180 8685
 E-mail: info@liteharbor.com

Website: www.liteharbor.com
 Specifications subject to change w/o notice
 Revision: Mar. 2022

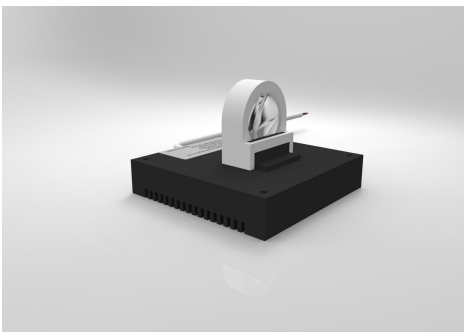


Explosive view

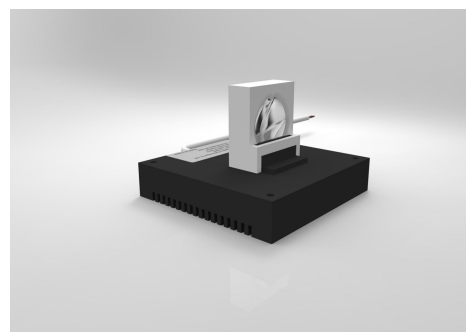


LED MINI SPOTLIGHT

X-Light III Series



Half -round Shape



Square Shape

*Other special requirements please contact with our sales.



Liteharbor Lighting Technology Co., Lt
New Industry Area Hecun Danzao Town
Nanhai Foshan City Guangdong China

TEL: +86-757-8180 8687
FAX: +86-757-8180 8685
E-mail: info@liteharbor.com

Website: www.liteharbor.com
Specifications subject to change w/o notice
Revision: Mar. 2022