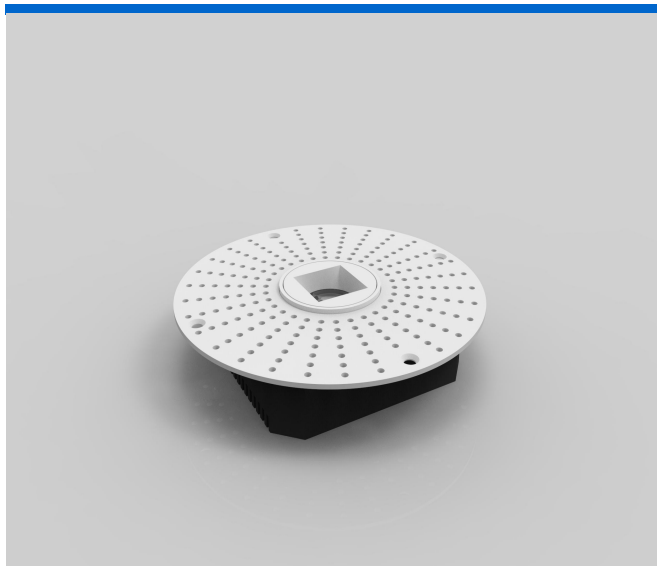
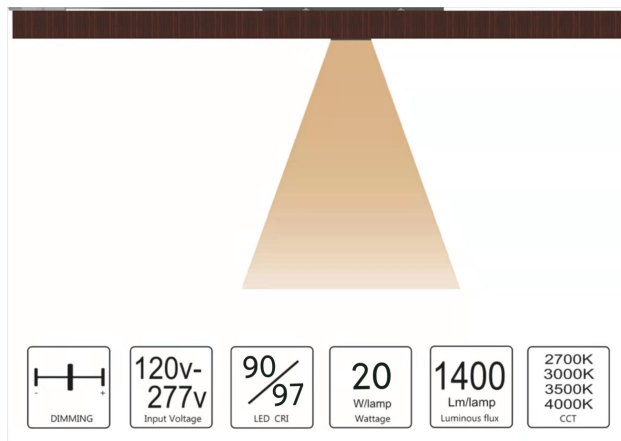


X-Light-E II 1 Inch Super Thin LED Mini Spotlight

Catalog #		Prepared by	LiteHarbor
Project		Date	
Notes			



X-Light-C LED Mini Spotlight With PoE Solution



Description

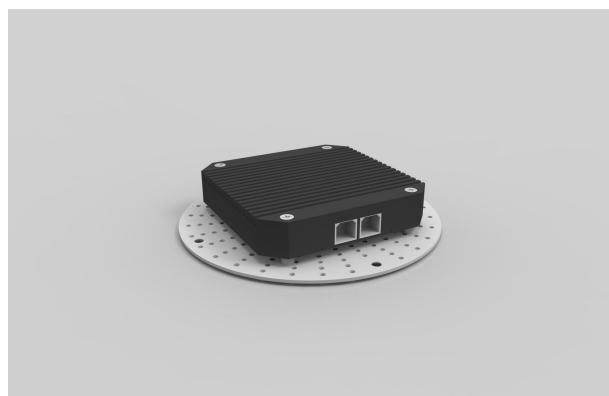
X-Light II series, it provides a quick and convenient installation method, provides the solution of the edge of architecture lighting, and makes a big breakthrough in the use and design. 1 inch (∅25mm) of the light-emitting surface the size to achieve the ultimate.

Features

- X-light-E with square and circular light emission effect.
- Use big brand COB light source with high luminous efficiency (140lm/w) and long service life (80000 hours).
- Professional light distribution devices, no glare, perfect control light, spot even transition.
- Easy to change light sources, and multiple trim can share one housing.

Lamp Body

- Ultra thin, the height of the whole lamp is only 23mm .
- Ultra small light emitting surface, only 1 inch (∅25mm).
- All-in-one die casting lamp body with unique appearance.
- Double-sided heat dissipation, can be made into IC type directly.
- The anti-pull device is hidden inside the lamp body.



Advantages of PoE Solution

Liteharbor's X-Light-E adopt Cat 6/Cat 7/Cat 8 Ethernet Cable with UL Listed. PoE technology sends 10/45 Gbps of data and 30W, 60W up to 90W of power budget to devices over Cat7 and Cat8 Ethernet cables for a maximum distance of 100m..

PoE lighting uses Power over Ethernet technology to connect, monitor, and control LED light fixtures used in smart building solutions. Smart PoE lighting reduces installation and operating costs by more than half and helps building owners meet wellness and sustainability goals.

*Other special requirements please contact with our sales.



Liteharbor Lighting Technology Co., Ltd.
New Industry Area Hecun Danzao Town
Nanhai Foshan City Guangdong China

TEL: +86-757-8180 8687
FAX: +86-757-8180 8685
E-mail: info@liteharbor.com

Website: www.liteharbor.com
Specifications subject to change w/o notice
Revision: May. 2022

Power Supply

- Wide voltage input 120-277VAC, 50/60 Hz, 0-10V dimming, constant voltage and constant current mode.
- The power has UL listed, can be applied to a variety of applications.
- Integrated power supply, easy to replace the power supply.
- The input voltage of each lamp is 24V, the load termin can be used independently.
- Each luminaire is connected in parallel, one power supply can simultaneously control the use of five lamps.

Applications

Apply to residential, offices, hotels, shopping mall stores etc.

Mounting And Maintenance

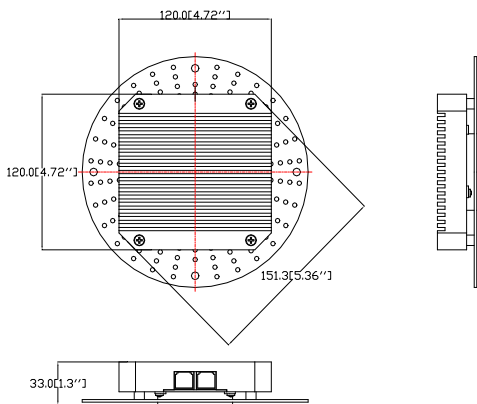
- Remodel and new construction optional.
- Wide range of applications, it can be installed in different ceiling thickness, is the real universal type downlight.
- Cut-out dimensions 142*142mm .
- The subsequent decoration is also convenient and quick.
- There is no welding between the light source and the power supply. Can replace the LED lamp beads according to the demand.

Listing / Warranty

- ETL listed to US and Canadian standards for damp location W/Feed through.
- 5 Year Limited Warranty.

Dimensions

Ceiling cut out ϕ 5.36"



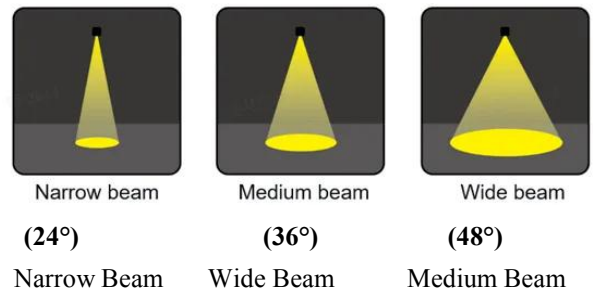
Lamp

Wattage	20W Max./lamp
Input Voltage	120-277V/24V (PoE Scheme)
CCT	3000K/4000K/5000K/6500K
CRI	90+/95+/97+
Luminous Flux	85lm/lamp
Beam Angle	24°/36°/48°
Light source	COB
Life span	5-Year

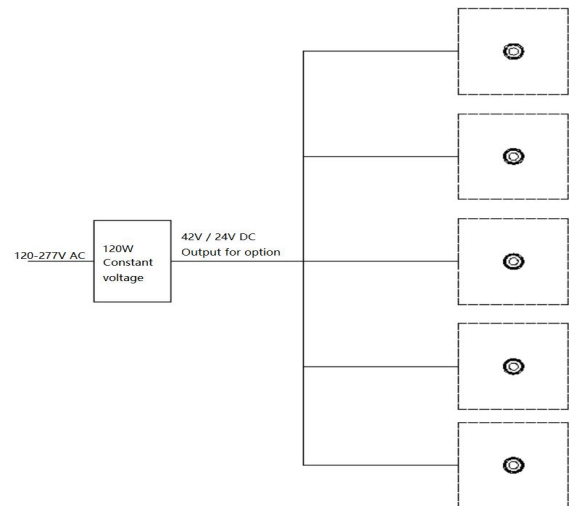
Power Supply

Wattage	120W Max .
Input Voltage	120-277V AC
Frequency	50/60 Hz
Output Voltage	24V
Electric current	3.4A Max .
Power Factor	>0.9
Dimming	0-10V Dimming

Optics



Wiring Diagram



*Other special requirements please contact with our sales.

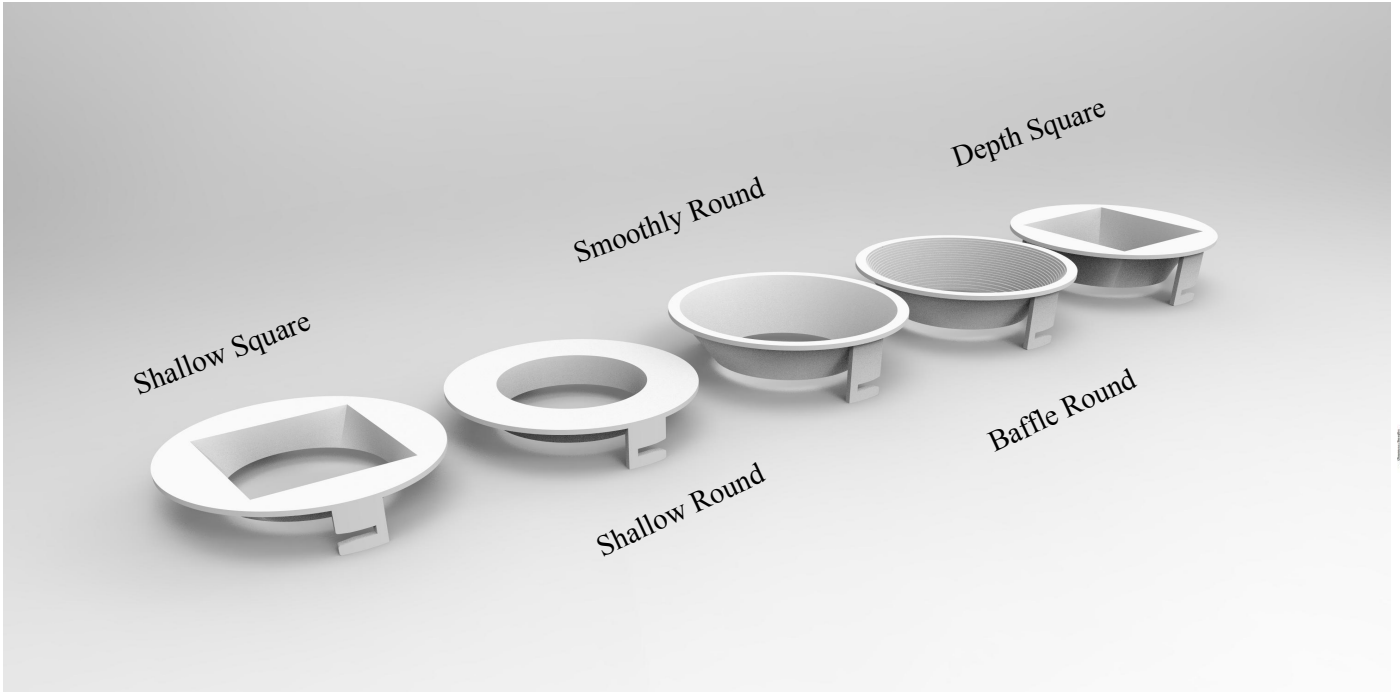


Liteharbor Lighting Technology Co., Ltd.
 New Industry Area Hecun Danzao Town
 Nanhai Foshan City Guangdong China

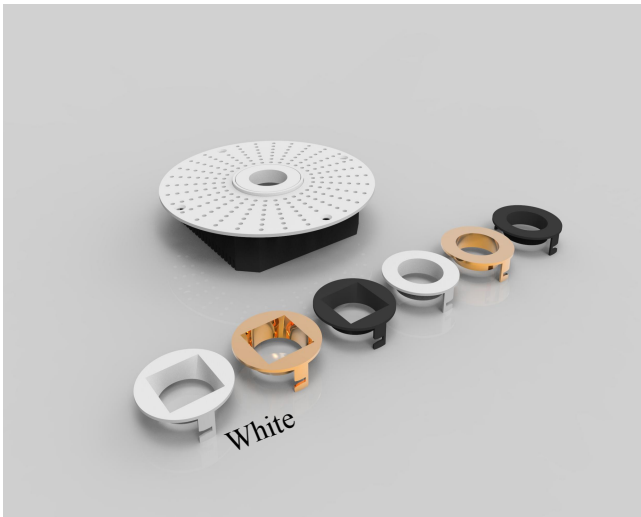
TEL: +86-757-8180 8687
 FAX: +86-757-8180 8685
 E-mail: info@liteharbor.com

Website: www.liteharbor.com
 Specifications subject to change w/o notice
 Revision: May. 2022

Reflector

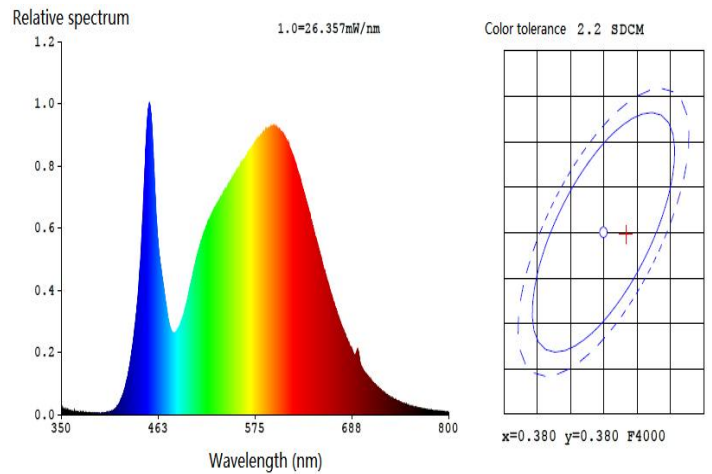


Finish



Spectrogram

This is the naked test results of the light source and driver.



Line Pressure Drop Reference Table

Drive power supply output line voltage drop reference table (Uout=42V/24V Plamp=16W Voltage drop≤5%)

	18AWG	16AWG	14AWG	12AWG	10AWG
1 Light	≤270m	≤450m	≤700m	≤1100m	≤1800m
2 Lights	≤130m	≤220m	≤350m	≤550m	≤900m
3 Lights	≤60m	≤110m	≤170m	≤270m	≤450m
4 Lights	≤30m	≤55m	≤80m	≤130m	≤220m
5 Lights	≤15m	≤25m	≤40m	≤60m	≤110m

*Other special requirements please contact with our sales.



Liteharbor Lighting Technology Co., Ltd.
 New Industry Area Hecun Danzao Town
 Nanhai Foshan City Guangdong China

TEL: +86-757-8180 8687
 FAX: +86-757-8180 8685
 E-mail: info@liteharbor.com

Website: www.liteharbor.com
 Specifications subject to change w/o notice
 Revision: May. 2022

Ordering Guide

X-Light II Series	Mounting	Wattage	Color Temperature
<input type="checkbox"/> X-light-E II	<input type="checkbox"/> RD Remodel <input type="checkbox"/> NC New Construction	<input type="checkbox"/> 16 16W/lamp <input type="checkbox"/> 20 20W/lamp	<input type="checkbox"/> 30K 3000K <input type="checkbox"/> 40K 4000K <input type="checkbox"/> 50K 5000K <input type="checkbox"/> 65K 65000K <input type="checkbox"/> DW Dim to Warm <input type="checkbox"/> TW Tunable White

Input Voltage	Dimmable	Luminous Flux	Optics
<input type="checkbox"/> 120 120V	<input type="checkbox"/> Triac Triac dimming	<input type="checkbox"/> 1400 1400lm	<input type="checkbox"/> 24 24°
<input type="checkbox"/> U 120V-277V	<input type="checkbox"/> 0-10V 0-10Vdimming	<input type="checkbox"/> 1700 1700lm	<input type="checkbox"/> 36 36°
<input type="checkbox"/> PoE 24V (PoE Scheme)			<input type="checkbox"/> 48 48°

Reflector	Finish	CRI	Light Source
<input type="checkbox"/> SSF Shallow Square Framed	<input type="checkbox"/> WH White	<input type="checkbox"/> 90 90+	<input type="checkbox"/> CREE
<input type="checkbox"/> DSF Depth Square Framed	<input type="checkbox"/> BK Black	<input type="checkbox"/> 95 95+	<input type="checkbox"/> Citizen
<input type="checkbox"/> SRF Shallow Round Framed	<input type="checkbox"/> SN Satin Nickel	<input type="checkbox"/> 97 97+	<input type="checkbox"/> Epistar
<input type="checkbox"/> SRFL Smoothly Round Frameless			<input type="checkbox"/> Seoul
<input type="checkbox"/> BRFL Baffle Round Frameless			<input type="checkbox"/> Osram

Install Accessories	Ethernet Cable
<input type="checkbox"/> Ceiling Tapper	<input type="checkbox"/> C6 Cat6
<input type="checkbox"/> Ethernet Cable	<input type="checkbox"/> C7 Cat7
<input type="checkbox"/> RJ45 Connectors	<input type="checkbox"/> C8 Cat8
<input type="checkbox"/> RJ45 Crimp Tool Kit	

*Other special requirements please contact with our sales.



Liteharbor Lighting Technology Co., Ltd.
New Industry Area Hecun Danzao Town
Nanhai Foshan City Guangdong China

TEL: +86-757-8180 8687
FAX: +86-757-8180 8685
E-mail: info@liteharbor.com

Website: www.liteharbor.com
Specifications subject to change w/o notice
Revision: May. 2022

Explosive View

Heat sink

All-in-one forging and pressing lamp body with unique appearance
Double-sided heat dissipation can be made into ic type directly

Light source

High-performance famous LED brand available in various color temperatures
Custom integral microprocessor for thermal protection and equal light output.

Screw

Trimless

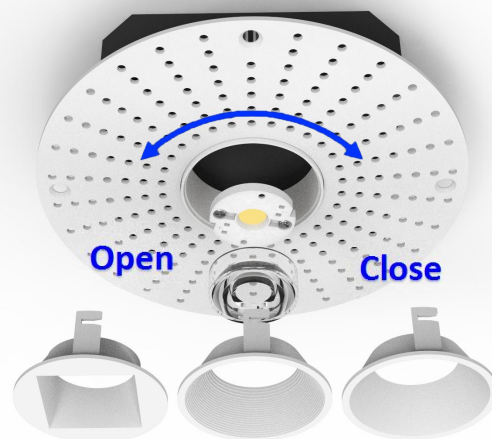
Mesh plate plaster-in design Create a seamless appearance between luminaire and ceiling

Round Reflector Cup

Professional light distribution devices, no glare, perfect control light, spot even transition
High quality aluminum alloy, reduce the weight of the light body, easy to maintain
There are three options: shallow square framed, depth round framed, shallow round framed, smoothly round frameless, baffle round frameless



The trim is easy to replace with a buckle structure, which can be removed only by rotating around.



*Other special requirements please contact with our sales.



Liteharbor Lighting Technology Co., Ltd.
New Industry Area Hecun Danzao Town
Nanhai Foshan City Guangdong China

TEL: +86-757-8180 8687
FAX: +86-757-8180 8685
E-mail: info@liteharbor.com

Website: www.liteharbor.com
Specifications subject to change w/o notice
Revision: May. 2022

Install Accessories

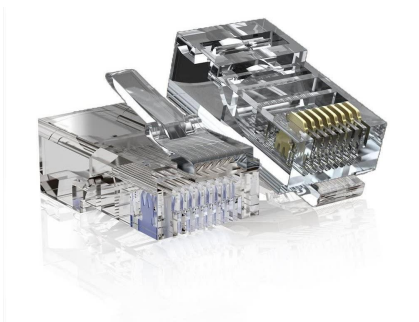
Ethernet Cables Reference



Attribute	Cat 6	Cat 7	Cat 8
Frequency	250 MHz	600MHz	2000MHz
Transmission speed	1Gbps/10 Gbps	10 Gbps	25 Gbps/40 Gbps
Distance	100m	100m	30m
Number of Connectors in Channel	4	4	2
Cable Construction	UTP or Shielded	Shielded	Shielded
Connector Type	RJ45	RJ45	RJ45
AWG	24 AWG	30 AWG	26AWG

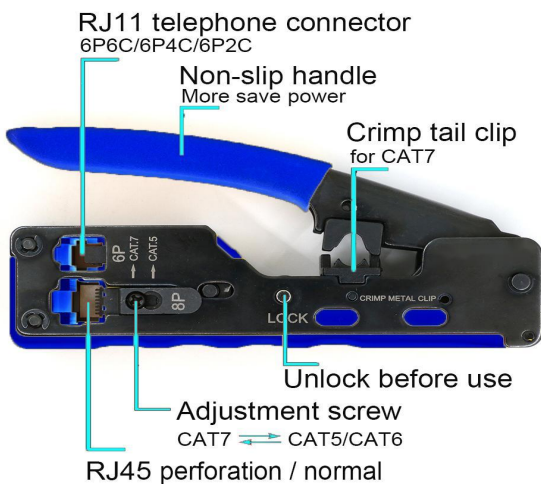
RJ45 Connectors

Modular plug clear plastic easy to DIY ethernet cable when you need.



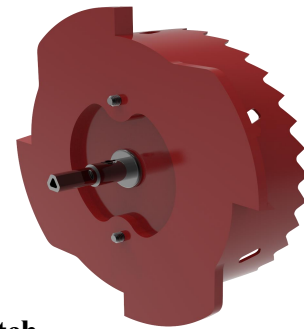
Crimp Tool Kit

All-in-one RJ11/RJ12/RJ45 Modular Tool, Pass-Through Wire Stripper Cutter Crimper for Cat5/5e Cat6/6a Cat7 Cat8 Modular Plugs Connectors with Dovetail Clip.



Ceiling Tapper

Patented circular tooth tapper, Simple operation, the ceiling cut hole quickly.



PoE Switch

Not supplied by Liteharbor.



*Other special requirements please contact with our sales.



Liteharbor Lighting Technology Co., Ltd.
 New Industry Area Hecun Danzao Town
 Nanhai Foshan City Guangdong China

TEL: +86-757-8180 8687
 FAX: +86-757-8180 8685
 E-mail: info@liteharbor.com

Website: www.liteharbor.com
 Specifications subject to change w/o notice
 Revision: May. 2022



LED MINI SPOTLIGHT