

# BL8-FM9 & BL8-SFM9 9" 3CCT LED Flush Mount

Catalog #	Prepared by	LiteHarbor
Project	Date	
Notes		



**BL8-FM9**



**BL8-SFM9**

## ORDER MATRIX | Example:BL8-FM9

<u>A</u>	<u>B</u>	<u>C</u>	<u>D</u>	<u>E</u>	<u>F</u>	<u>G</u>
A	Series					
BL8-FM9	9" Round LED Flush Mount					
BL8-SFM9	9" Square LED Flush Mount					
B	Input Voltage					
	120V					
277	277V					
U	120-277V					
C	Dimmable					
	Non-Dimmable					
DM	Dimmable					
D	LED Available					
Cree	Cree					
Citizen	Citizen					
Epistar	Epistar					
Seoul	Seoul					
Osram	Osram					

## Description

An architecturally pleasing, easy to install and low profile slim LED instant mount round and square aperture downlighting.

Slim line, light weight and sleek look, provides more uniform light and an instant on.

It is a low profile downlight intended for ceiling or wall mount applications.

This luminaire offers the appearance of a recessed downlight but is actually surface mounted.

3CCT range changeable, 3000K, 4000K and 5000K

## Applications

Slim LED Flush Mount Downlight is characterized by a completely flat lens with a narrow flange, giving it an architecturally pleasing look.

This downlighting solution offers an affordable alternative to Air-Seal IC recessed housings or Fire-Rated boxes, reducing material and installation costs.

## Emergency

24 hours recharge time

>90 minute operation from battery

over-charge/discharge protection

Other special requirements please confirm with factory.



**Liteharbor Lighting Technology Co., Ltd.**  
New Industry Area Hecun Danzao Town  
Nanhai Foshan City Guangdong China

TEL: +86-757-8180 8675  
FAX: +86-757-8180 8685  
E-mail: info@liteharbor.com

Website: www.liteharbor.com  
Specifications subject to change w/o notice  
Revision: Jan. 2015



E	Lumen Output
BL8-FM9	1120 Lumen
BL8-SFM9	1130 Lumen

F	Color Temperature
27K	2700K
40K	4000K
50K	5000K
60K	6000K
3CCT	3000K-4000K-5000K Tunable

G	Emergency System
	Without Emergency Battery Backup
EM	With Emergency Battery Backup

### Listing & Warranty

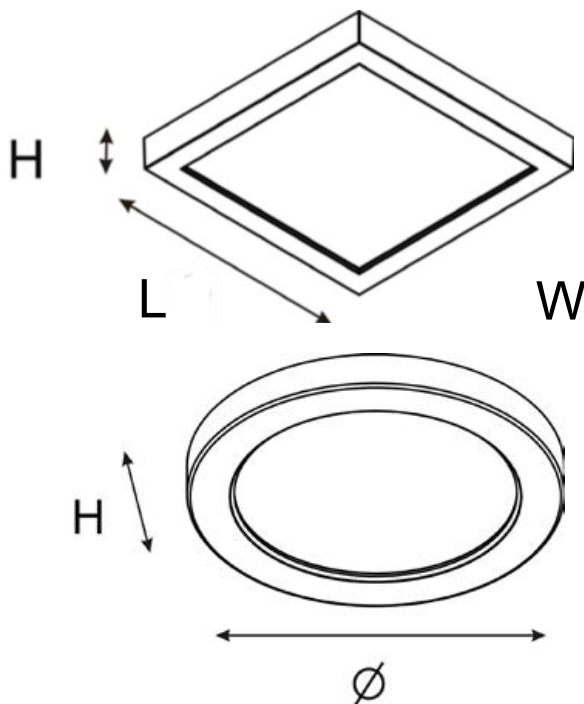
ETL Certificated

2-Year Limited Warranty

### Dimensions

Round: Ø9"x H:1"

Square: L9" x W9" X H:1"



### Features

LED 9" flush mount

Decorative flush mount LED fixture

14W Equal to a traditional 100W lamp

84% energy savings

Damp location listed

Mounts directly to 3" and 4" junction boxes

Easy to install

### Finish

Available in White, Brushed Nickel, and Bronze

### Application

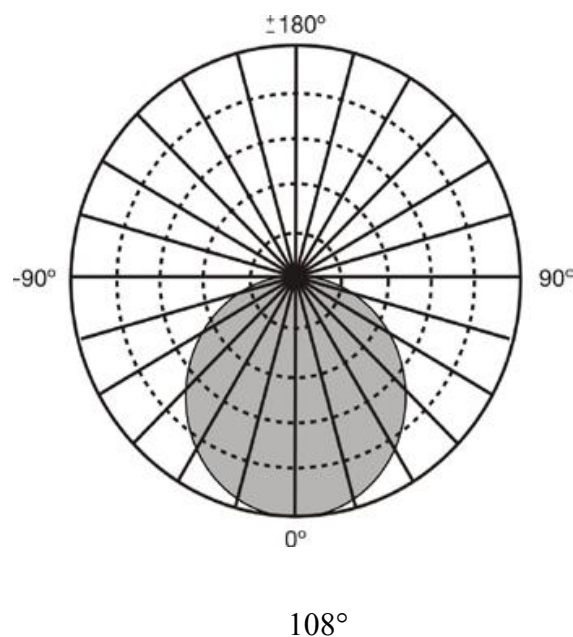
Residential

Office

Retail

Hospitality

### Light Distribution



Other special requirements please confirm with factory.



**Liteharbor Lighting Technology Co., Ltd.**

New Industry Area Hecun Danzao Town

Nanhai Foshan City Guangdong China

TEL: +86-757-8180 8675

FAX: +86-757-8180 8685

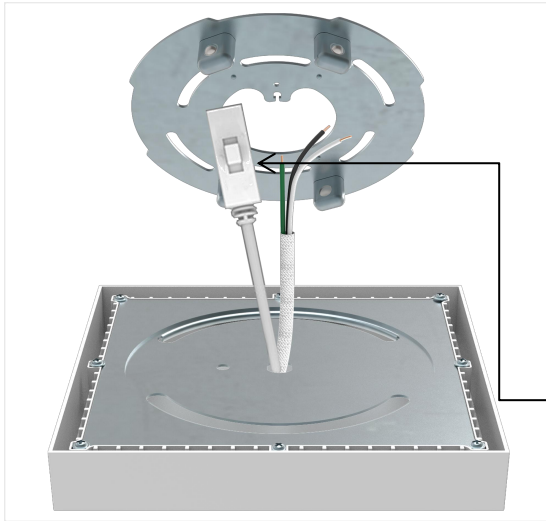
E-mail: [info@liteharbor.com](mailto:info@liteharbor.com)

Website: [www.liteharbor.com](http://www.liteharbor.com)

Specifications subject to change w/o notice

Revision: Jan. 2015





**3** SETTING  
OPTIONS  
OPTIONS  
DE RÉGLAGE

- **3000K**  
Warm white  
Blanc chaud
- **4000K**  
Bright White  
Blanc brillant
- **5000K**  
Daylight  
Lumière du jour



**Installation Instruction**

**Fast and Easy Installation**

- Mounts directly to any 3" and 4" junction boxes
- The quick connector makes easy and fast connection, the universal mounting plate ensure a clean and tight fit.



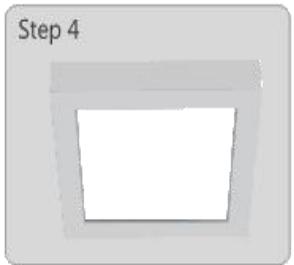
Simply screw the unique design universal mounting plate to the junction box



Make your connections using the quick connect included, and fit into place.



Snap the fixture onto the mounting plate.



Installation finished, Enjoy the sleek ceiling.

LED CEILING LIGHT

Other special requirements please confirm with factory.



**Liteharbor Lighting Technology Co., Ltd.**  
New Industry Area Hecun Danzao Town  
Nanhai Foshan City Guangdong China

TEL: +86-757-8180 8675  
FAX: +86-757-8180 8685  
E-mail: info@liteharbor.com

Website: www.liteharbor.com  
Specifications subject to change w/o notice  
Revision: Jan. 2015