

Liteharbor Lighting Technology Co.,Ltd

Tel : +86 0757-81808688

Fax : +86 0757-81808685

Web: www.poelightingssolution.com

China factory :

www.liteharbor.com

www.liteharborfactory.com

Email : Info@liteharbor.com

Factory Add : New Industry Area, hecunDanzao Town,Nanhai Foshan City China



Website

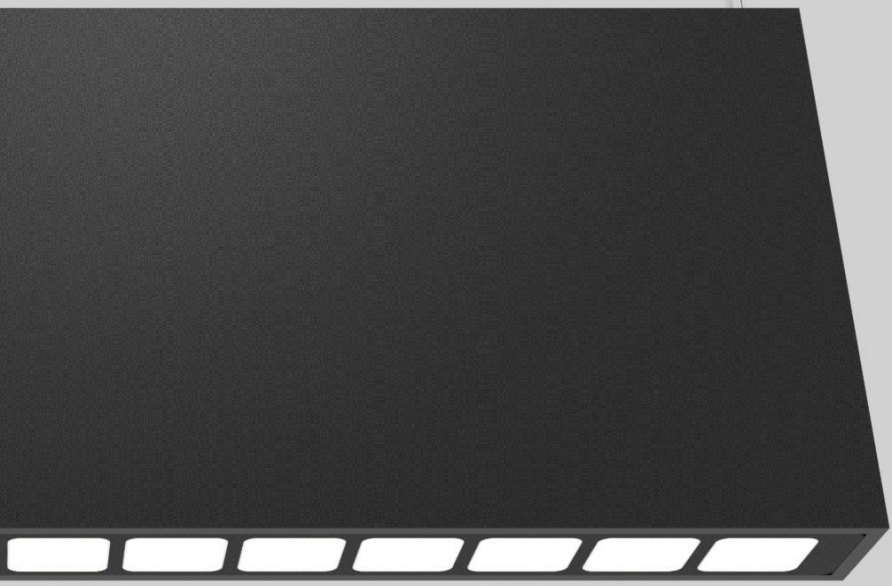


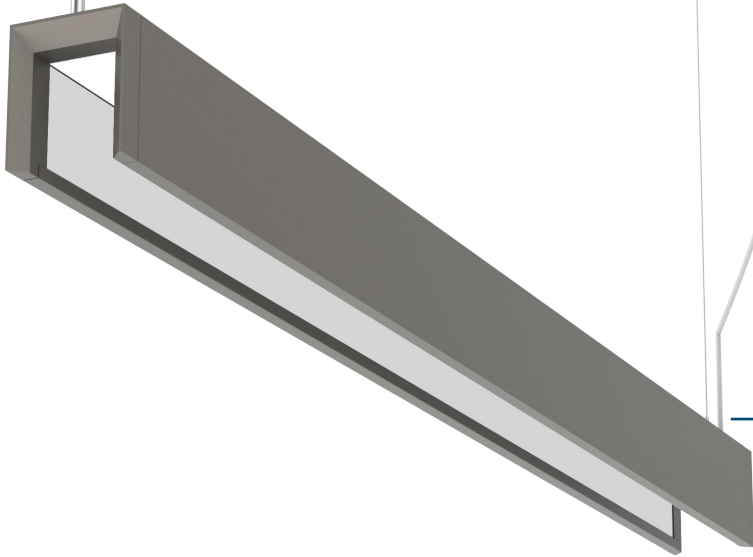
Factory
Website



Facebook

PoE Solutions





About Liteharbor

Liteharbor Lighting Technology Co., Ltd is a famous lighting manufacturer focus on high quality residential lighting, commercial lighting, industrial lighting and architectural lighting, founded 2005 by Billy Liang in Foshan City GD China. We have more than 200 machineries, 350 employees and 200,000 square feet factories.

To insure all the quality controlled and the delivery on time, we make all the parts and finishes in house, such as molds, CNC center, hardware stamping, spinning, hydraulic pressing, die casting, polishing, drilling and tapping, laser cutting, bending, welding, powder coating, anodizing, driver assembling and finished products assembling. By making all parts in house we help customers saving 20%-30% cost comparing other companies. All our products are cETLus, cULus, FCC, ES or CE and CQC approved.

To keep supplying our customers brand new products, our 20+ remembers R&D team design more than 20 new items each year. With our efficiency product developing, both our customers and Liteharbor are lighting industry pioneers and leaders.

Liteharbor has Professional QC team who are 20 Years experienced in lighting industry. We have ISO system, QMS system, TQM system and ERP system to support our daily management.

What is PoE?



Power over Ethernet (PoE) is a standard for passing electrical power and data through a network cable, thus eliminating the need for a separate power supply and AC outlet to power connected devices.

– Since 2003, it has been used in devices, such as cameras and phones. In 2018, however, the technology advanced to allow for a more substantial wattage load (90W), making it an increasingly appealing and beneficial option for entire building systems, including lighting.

The digital age has led to the adoption of smart technology that facilitates today's building management and future-proofs buildings for tomorrow's developments. PoE networks are becoming a mechanism to improve overall building efficiencies and maximize energy savings in new construction or remodel projects.

Advantages of PoE

The primary advantage of power over ethernet is the delivery of data and power over one Cat5 or Cat6 ethernet cable. Remote installation generally costs less than optical fiber and does not require a qualified electrician, saving building owners valuable time and labor costs.

Top PoE benefits include:

Further Cost Savings

Easy, Low-Voltage Installation

Helps future-proof buildings

Enhanced Flexibility and Control

Enables software control integration

Social Benefits

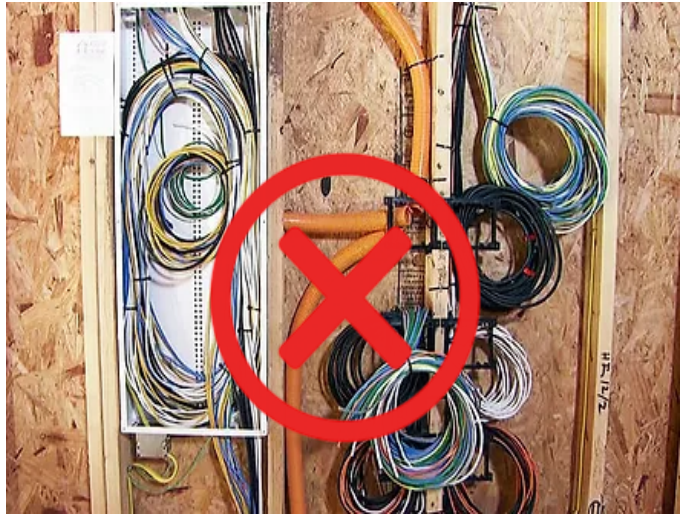
Robust, Secure and Reliable

One of the biggest advantages of PoE technology is cost savings.

PoE installation is cheaper than traditional electrical work, operating costs are lower over the course of the PoE lifetime and data can inform further decisions to save costs—all without sacrificing lighting quality for occupants.

Why use PoE Lighting

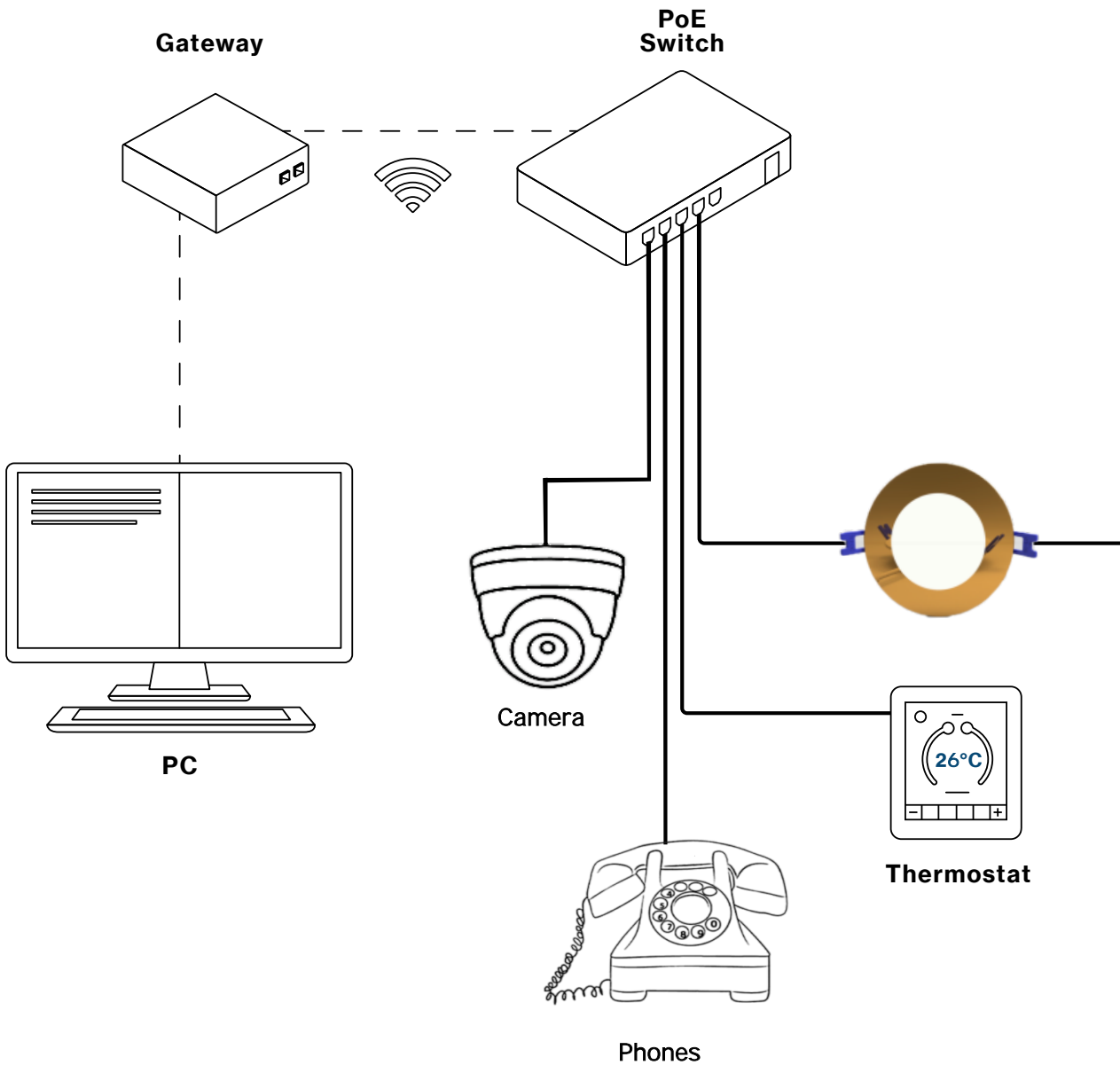
PoE lighting reduces power, material, labor and maintenance.



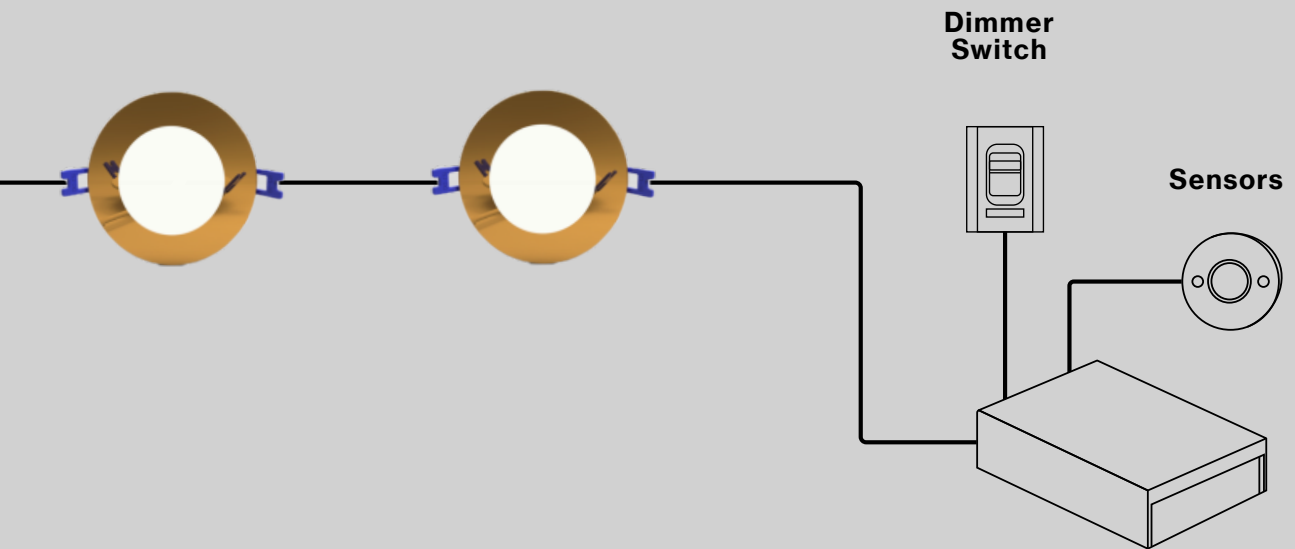
70% Cost Saving



Advantages of PoE



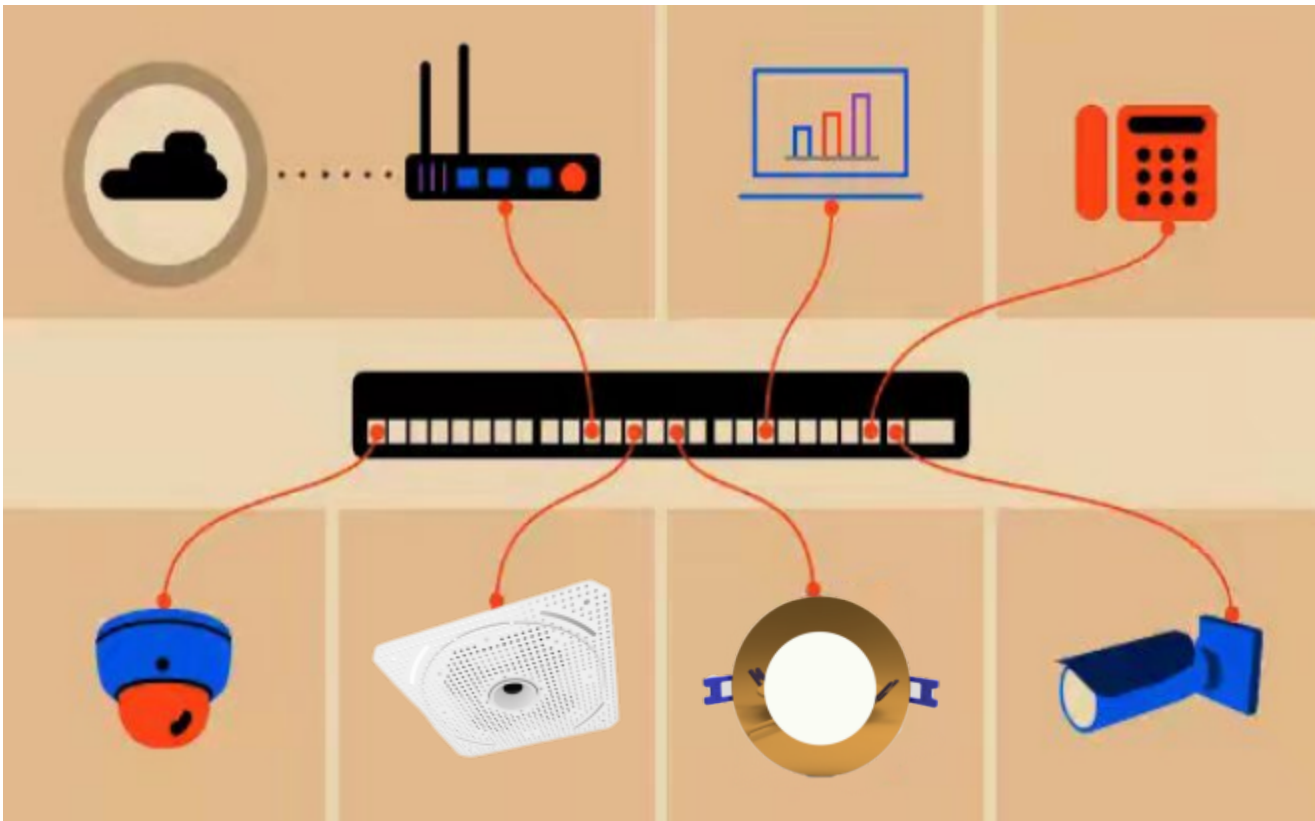
PoE lighting uses Power over Ethernet technology to connect, monitor, and control LED light fixtures used in smart building solutions. Smart PoE lighting reduces installation and operating costs by more than half and helps building owners meet wellness and sustainability goals. Since the low voltage PoE system does not require shielded cables, conduit runs are eliminated early in the construction process.



Discover the Power of PoE Smart Building Technology

With our vast selection of Power over Ethernet (PoE) compatible luminaires, Focal Point gives specifiers, contractors, and building owners the ability to select the ideal luminaire for each application that will interface seamlessly with their smart building management system of choice. PoE compatible architectural recessed lighting, architectural linear lighting, Commercial downlights, residential downlights and pendants light provide the light quality and performance required while maximizing energy efficiency and supporting the deployment of a PoE network system.

Majority of Liteharbor Lighting fixtures are designed to be compatible with PoE without a driver, which makes them very desirable for PoE infrastructure. Our company specializes in architectural highly efficient interior LED fixtures which are fully powered through PoE. While being aesthetically pleasing and offering modern designs, they are also easily integrated into a network infrastructure based on PoE.

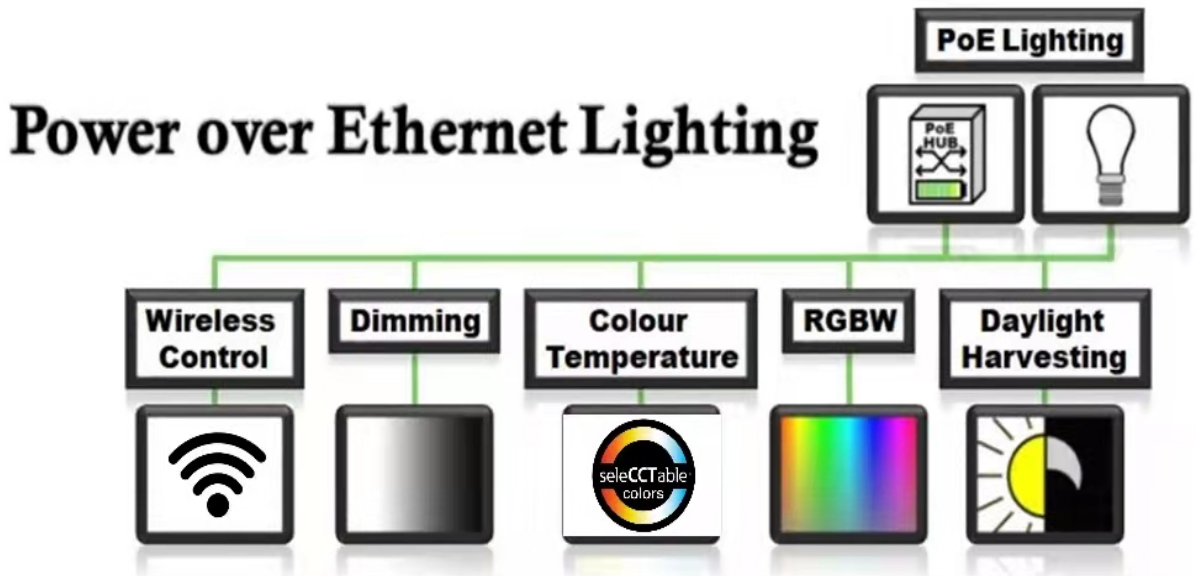


PoE Lighting Dimming

PoE lighting and other smart building technology can provide further benefits to a building 's occupants by optimizing lighting levels, balancing light colors and enhancing safety.

PoE systems offering unique and innovative smart building solutions. It have a white-tunable environment means that the lights are adjustable on a scale of warm, neutral, and cool lighting. Using the right balance of warm and cool lighting can help boost productivity, optimize shopping environments, enhance learning environments, and improve patient outcomes in healthcare facilities.

PoE can also accommodate RGB+W and tunable white controls, incorporate exit and emergency lighting systems, and address both small and large scale projects.



Where is PoE being used?

Power over Ethernet



• Offices



•Hospitals



•Education Facilities



•Public Facilities



•Hospitality



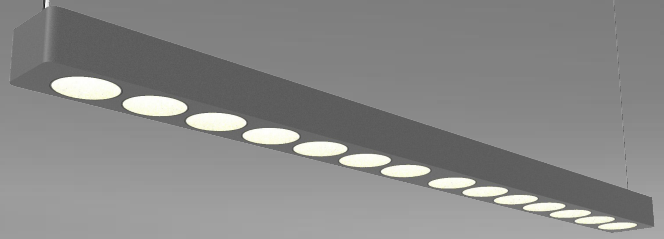
•Shopping Malls (Retail)

Liteharbor PoE Products

PoE technology can be integrated into many of Liteharbor's lighting solutions and product families including architectural recessed lighting, architectural linear lighting, Commercial downlights, residential downlights and pendants light.

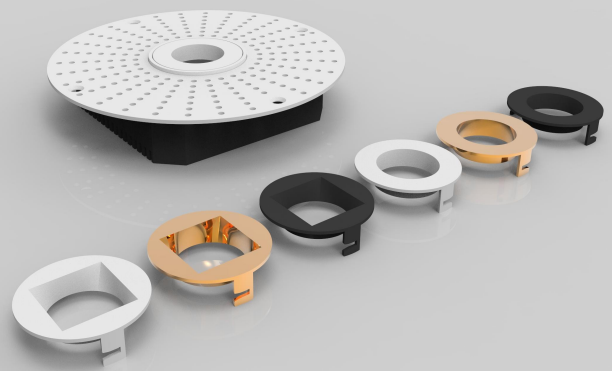
For nodes, we always aim for complete integration, but when space is limited, we look for a remote solution that doesn't compromise the design aesthetic.

Power over Ethernet

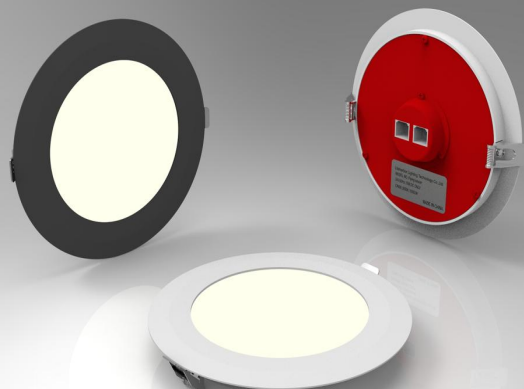


Architectural
linear lighting

Pendants light



Commercial
Downlight



Residential
Downlight