



LITEHARBOR



WhatsApp



Website



Facebook

Liteharbor Lighting Technology Co.,Ltd

Tel: 0757-81808688

Web: www.liteharbor.com

Email: Info@liteharbor.com

Factory Add: New Industry Area, hecunDanzao Town,Nanhai Foshan City China

提供先进科学的照明技术和光环境
Provide advanced scientific lighting technology and light environment



Liteharbor Lighting Technology Co., Ltd.

Liteharbor Lighting Technology Co.,Ltd is a manufacturer with 17-year experiences in designing, developing and supplying wide selections of lighting products.

Liteharbor factory covers an area of 9, 6000 m², There are hardware factory, mold factory, carton factory, assembly plant and LED factory and many other factories, and all those factory are well-equipped.

All Liteharbor products are strictly conforming to international standards. Liteharbor obtained over 200 international and domestic certification(cULus, cETLus, Energy Star, DLC, CE, RoHS). We add 30 new product patents annually.At present, we have acquired the ISO9001International Quality System Certificate.We have been awarded "national high-tech enterprise","green lighting enterprise","enterprise technology center","Foshan professional,unique and new enterprise" etc.

The company's products are mainly sold to North America countries such as United States and Canada. Over the years, it has accumulated rich product and industry experience in North America countries. Since June 2011, it has established domestic and Eurasian marketing centers to undertake high-end lighting projects and lighting project and provide lighting solutions, such as hospitality lighting, educational lighting, office lighting, commercial lighting, industrial lighting, infrastructure lighting, landscape cultural tourism lighting, supermarket lighting, urban building lighting, stadium lighting, bridge and tunnel lighting, residential Lighting etc.



Liteharbor Lighting Marketing Headquarters

Liteharbor products are mainly exported to developed countries such as the US and Canada, 17 years accumulated a wealth of products in developed countries and industry experience, and in June 2011, We have established a domestic and Eurasian marketing center to undertake high-end lighting projects, lighting projects and lighting solutions. 17 years, we have been committed to providing customers with professional, leading high-quality lighting products and quality,excellent efficient service.



Liteharbor Lighting Business School

LiteharborBusiness School is invested in December 25 2015,Founded by Liteharbor lighting technologyco.LTD. In the initial stage , there were 16 internal lecturers. Course contents include the marketing. e-commerce network operations business skills enterprise culture enterprise management lighting and photovoltaic and other professional knowledge and experience to share content. LiteharborBusiness School is multifaceted create a learning environment and atmospherelet more enterprise staff here can rapid growth, so that the business school has become the effective brand incubator company.



Liteharbor Lighting Technology Co., Ltd.

Minimalist Space, Extreme Performance
1", 1.4" LED RECESSED DOWNLIGHT

The X-light series with PoE compatible apply to leading building automation systems to support a scalable control solution and provide the flexibility required to meet the needs of diverse applications, now and in the future.



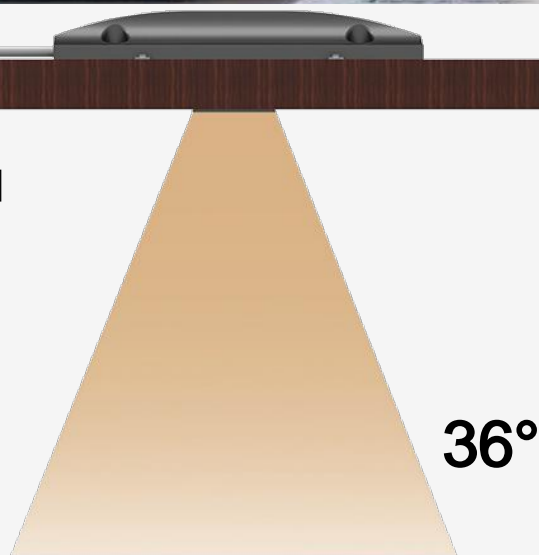
X-Light Series

X-Light series provides sophisticated architectural finish and a quick and convenient installation method. Designed to over deliver on light quality, efficiency, and configurability. 1 inch (25mm) of the light-emitting bringing illumination into the space.

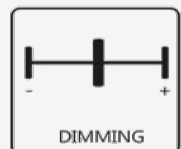




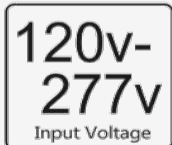
Beam Spread



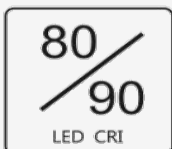
36°



DIMMING



Input Voltage



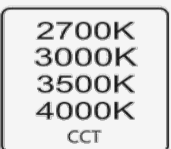
LED CRI



Wattage



Luminous flux



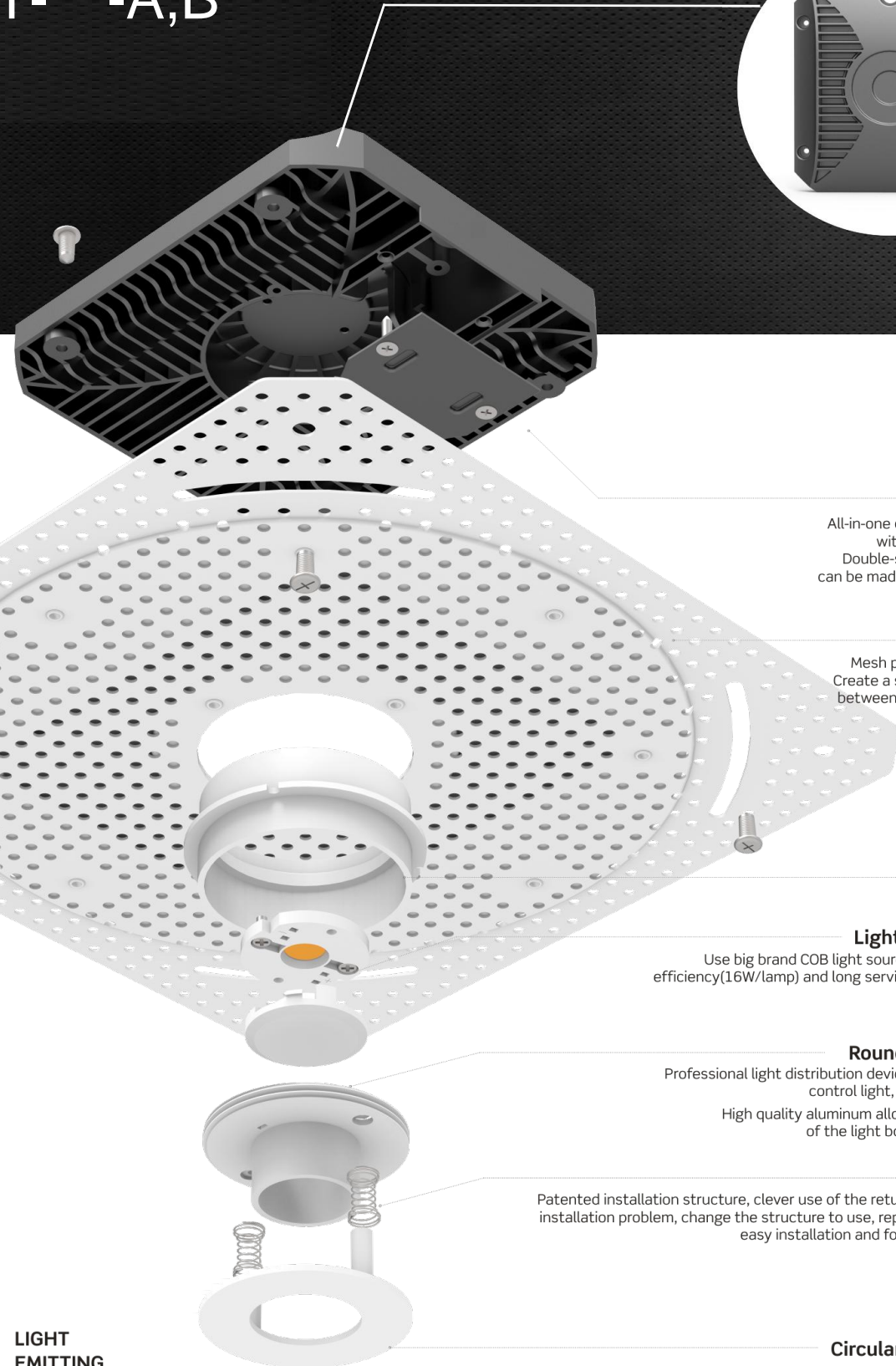
CCT

PERFORMANCE

X-light series with square and round light emission effect.
 Use big brand COB light source with high luminous efficiency (140lm/w) and long service life (100000 hours).
 Professional light distribution devices, no glare, perfect control light, spot even transition.

DESIGN

X-LIGHT- -A,B



Radiator

All-in-one die casting lamp body with unique appearance. Double-sided heat dissipation can be made into IC type directly.

Trimless

Mesh plate plaster-in design. Create a seamless appearance between luminaire and ceiling.

Fixed Parts

Light Source Module

Use big brand COB light source with high luminous efficiency(16W/lamp) and long service life(100000 hours)

Round Reflector Cup

Professional light distribution devices, no glare, perfect control light, spot even transition. High quality aluminum alloy, reduce the weight of the light body, easy to maintain

Return Spring

Patented installation structure, clever use of the return spring to solve the installation problem, change the structure to use, replace the light source, easy installation and follow-up maintenance.

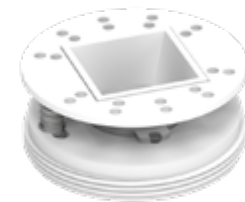
Circular Movable Cover

Lightweight milled aluminum body

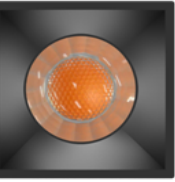
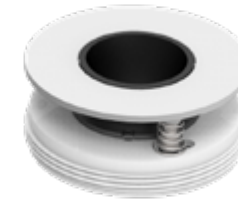
LIGHT EMITTING EFFECT OPTIONAL : Square / Round

Remodel/ New Construction are both Available

Super MINI OPTIC OPTION



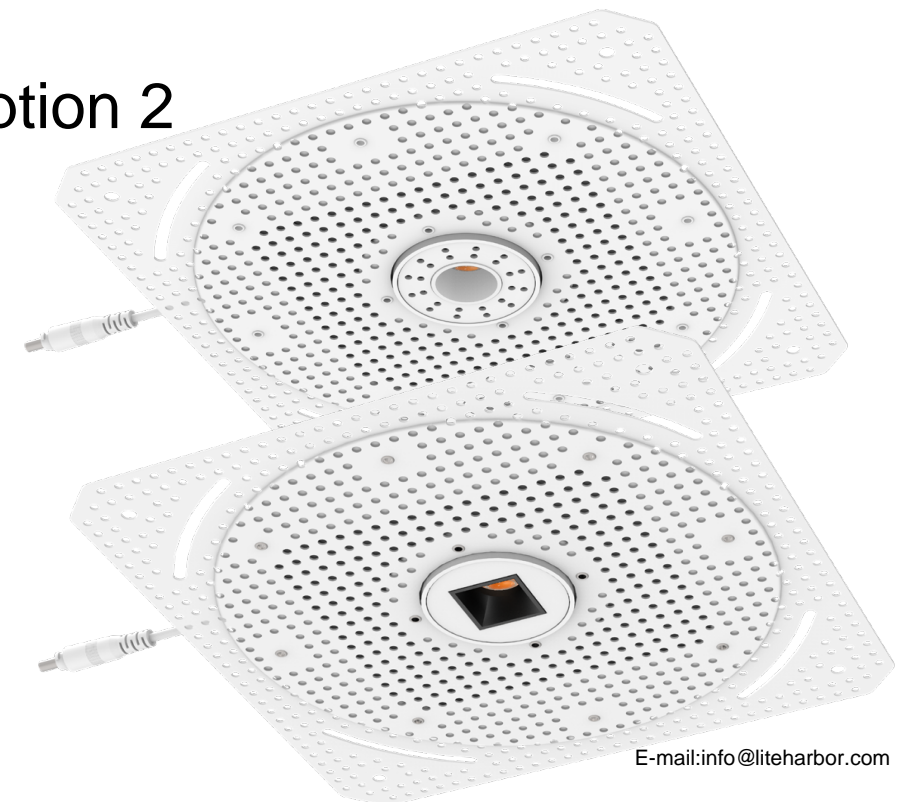
option 1



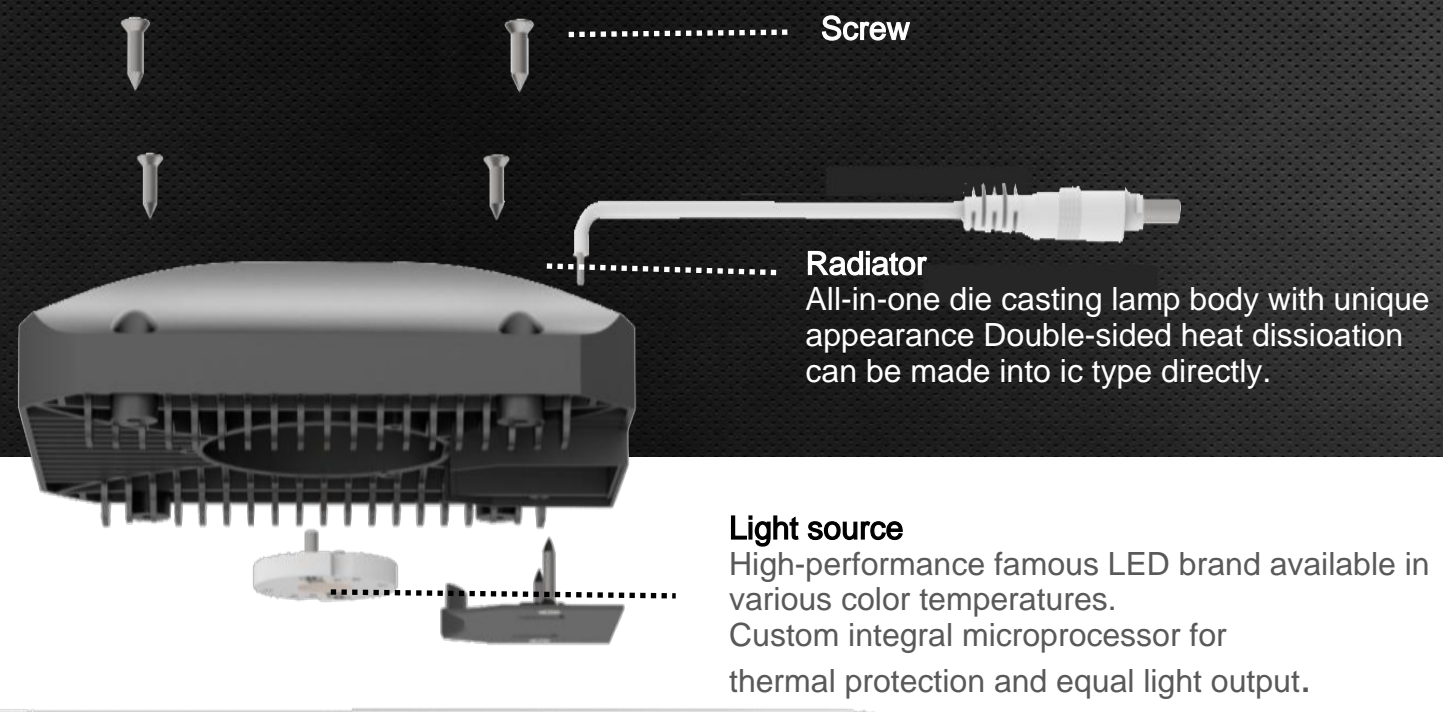
Round

Square

option 2



X-LIGHT- -C



Trimless
Mesh plate plaster-in design Create a seamless appearance between luminaire and ceiling

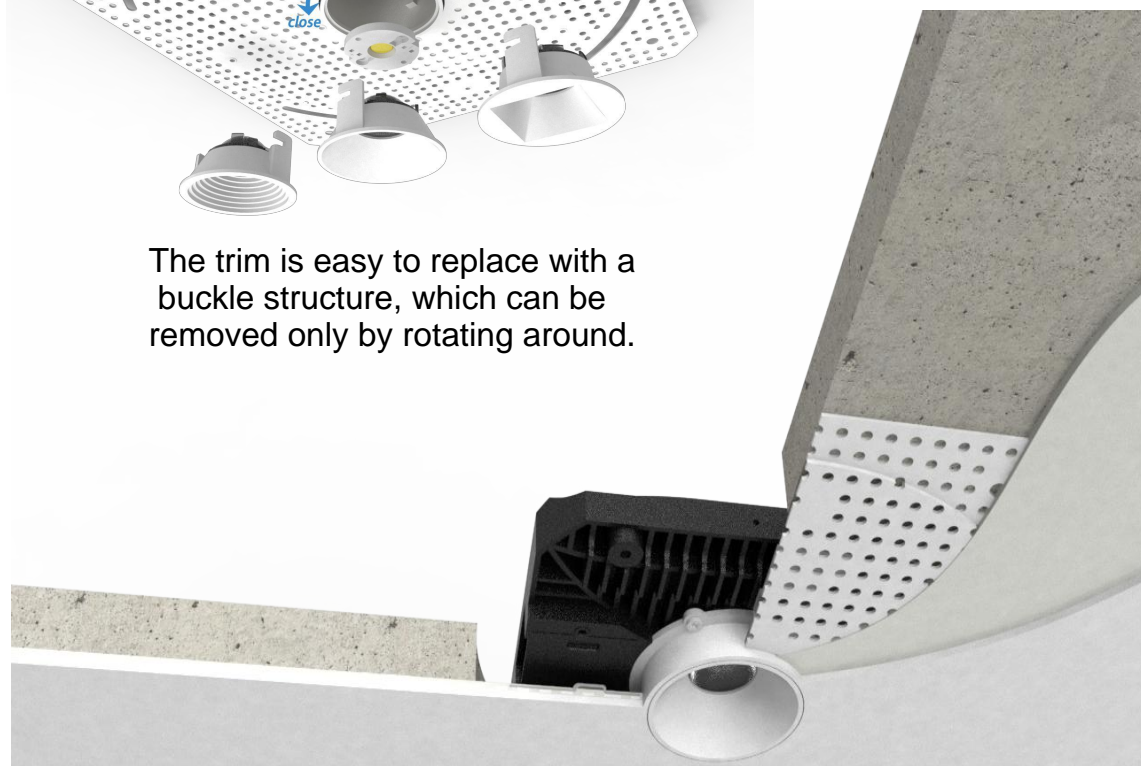


Round Reflector Cup
Professional light distribution devices, no glare, perfect control light, spot even transition
High quality aluminum alloy, reduce the weight of the light body, easy to maintain
There are three options: square, smoothly round, baffle round

OPTIC OPTION

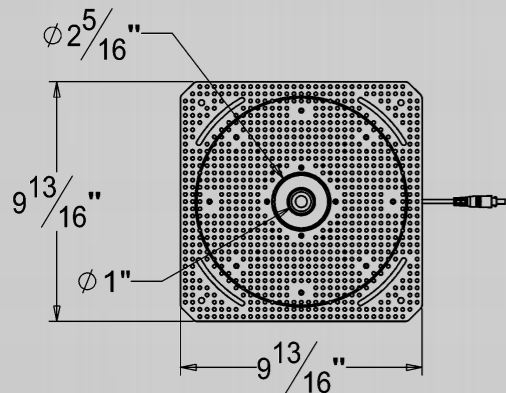


The trim is easy to replace with a buckle structure, which can be removed only by rotating around.



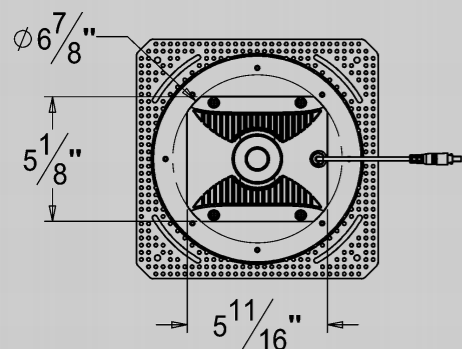
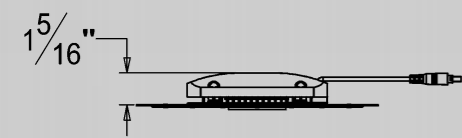
X-LIGHT

X-LIGHT - -A,B



Lamp Body

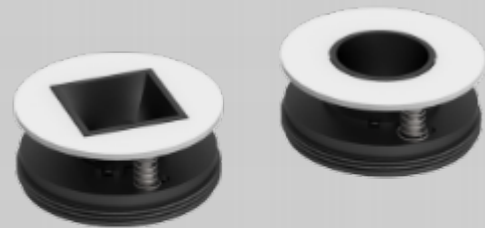
Ultra thin, the height of the whole lamp is only 23mm .
 Ultra small light emitting surface, only 1 inch (Φ25mm).
 All-in-one die casting lamp body with unique appearance.
 Double-sided heat dissipation, can be made into IC type directly.
 The anti-pull device is hidden inside the lamp body.



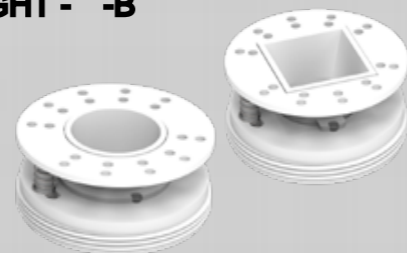
Electrical Specifications

- Wide voltage input 120-277VAC, 50/60 Hz, 0-10V dimming, constant voltage and constant current mode.
- The power has UL listed, can be applied to a variety of applications.
- Integrated power supply, easy to replace the power supply.
- The POE Scheme input voltage of 24V, the load termin can be used independently.
- Each luminaire is connected in parallel, one power supply can simultaneously control the use of five lamps.

X-LIGHT - -A



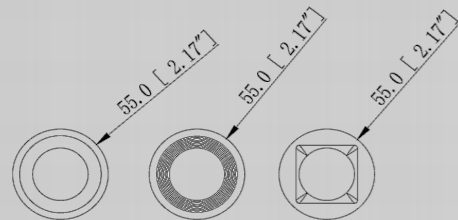
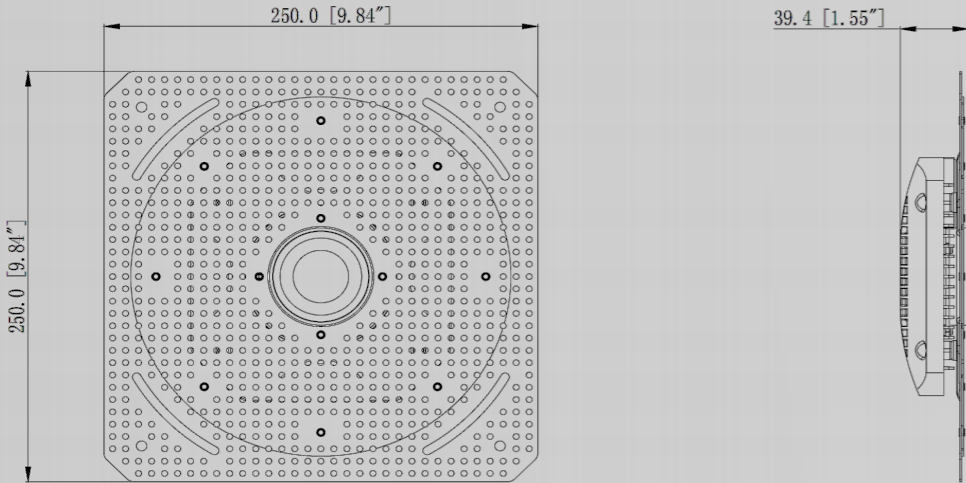
X-LIGHT - -B



X-light I	X-light- I - A,B	X-light- I - C
WATTAGE	16W Max	16W Max
DELIVERED LUMENS	1400 lm	1400 lm
CRI	80+/90+	80+/90+
COLOR TEMPERATURE	3000K/4000K/5000K/6500K	3000K/4000K/5000K/6500K
WARM DIM	1800K~3000K	1800K~3000K
TUNABLE WHITE	2700K-6000K	2700K-6000K
LIGHT SOURCE	A:(Non-replaceable)	Replaceable
BEAM SPREAD	36°	36°
TRIM OPTIONS	Round Framed/Round Frameless Square Framed/ Square Frameless	Baffle Round / Round / Square
INPUT VOLTAGE	120-277V AC / 24V	120-277V AC / DC 24V
DIMMING	0-10V Dimming // DMX512	0-10V Dimming / Tunable White / DMX512
FREQUENCY	50/60 Hz	50/60 Hz
RATINGS	Wet Location / Damp Location	Wet Location / Damp Location
LIFETIME	50000Hours	50000Hours
WARRANTY	5 Years	5 Years
STANDARDS	ETL Certified	ETL Certified

X-LIGHT

X-LIGHT - -C



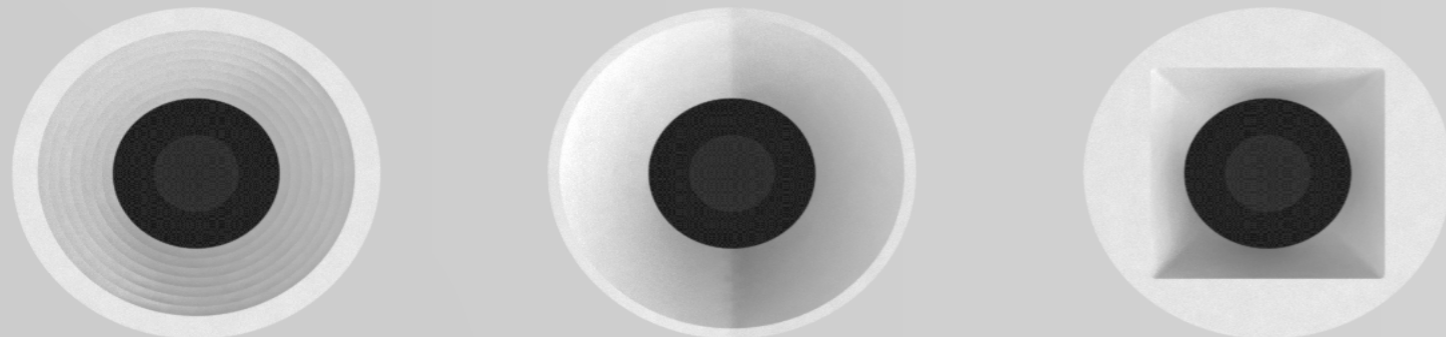
Lamp Body

Ultra thin, the height of the whole lamp is only 37.5 mm .
 Ultra small light emitting surface, only 1.83 inch (Φ46.67mm).
 All-in-one die casting lamp body with unique appearance.
 Double-sided heat dissipation, can be made into IC type directly.
 The anti-pull device is hidden inside the lamp body.

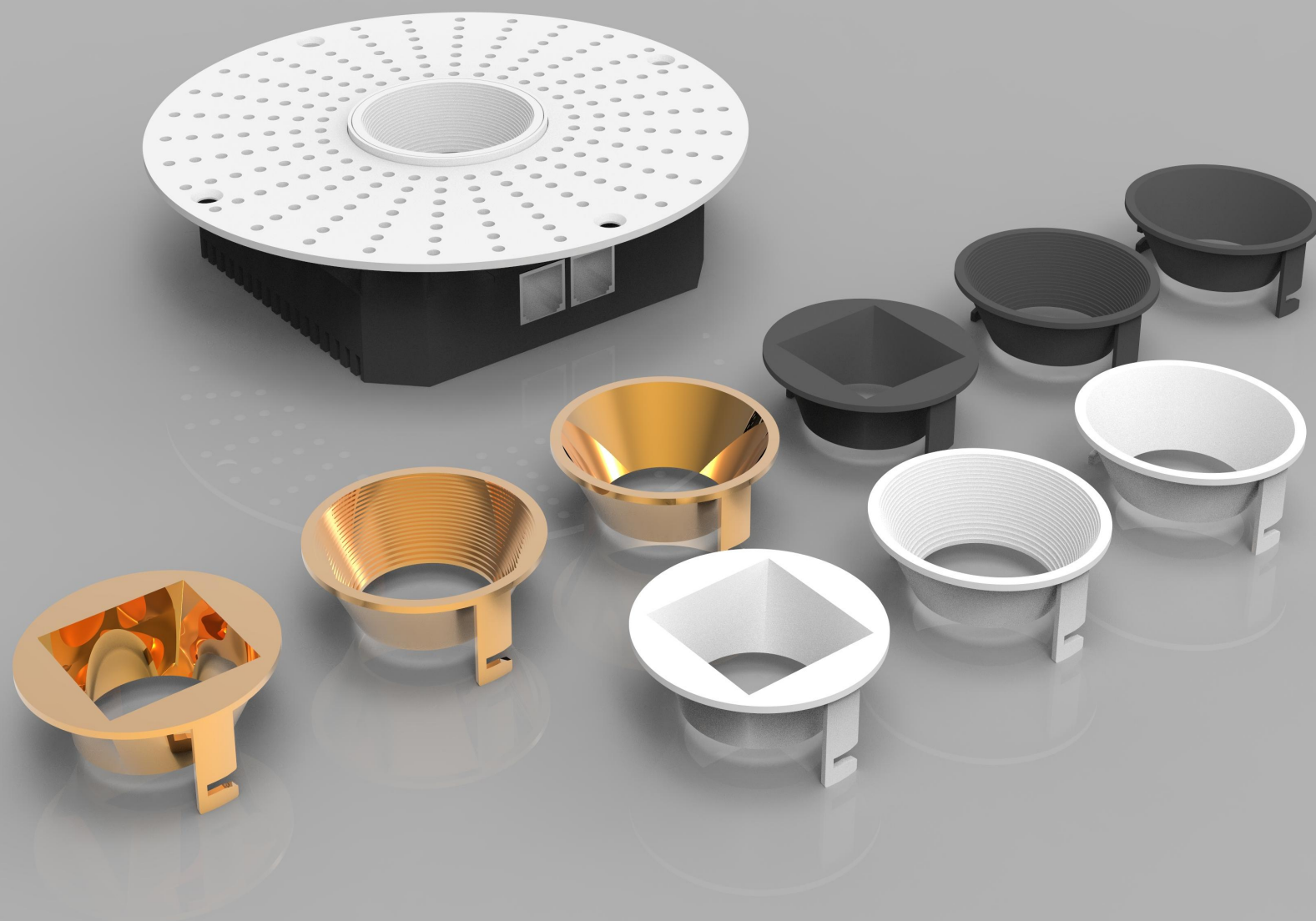
Electrical Specifications

- Wide voltage input 120-277VAC, 50/60 Hz, 0-10V dimming, constant voltage and constant current mode.
- The power has UL listed, can be applied to a variety of applications.
- Integrated power supply, easy to replace the power supply.
- The POE Scheme input voltage of 24V, the load termin can be used independently.
- Each luminaire is connected in parallel, one power supply can simultaneously control the use of five lamps.

X-LIGHT - -C



X-light I	X-light- I - A,B	X-light- I - C
WATTAGE	16W Max	16W Max
DELIVERED LUMENS	1400 lm	1400 lm
CRI	80+/90+	80+/90+
COLOR TEMPERATURE	3000K/4000K/5000K/6500K	3000K/4000K/5000K/6500K
WARM DIM	1800K~3000K	1800K~3000K
TUNABLE WHITE	2700K-6000K	2700K-6000K
LIGHT SOURCE	A:(Non-replaceable)	Replaceable
BEAM SPREAD	36°	36°
TRIM OPTIONS	Round Framed/Round Frameless Square Framed/ Square Frameless	Baffle Round / Round / Square
INPUT VOLTAGE	120-277V AC / 24V	120-277V AC / DC 24V
DIMMING	0-10V Dimming // DMX512	0-10V Dimming / Tunable White / DMX512
FREQUENCY	50/60 Hz	50/60 Hz
RATINGS	Wet Location / Damp Location	Wet Location / Damp Location
LIFETIME	50000Hours	50000Hours
WARRANTY	5 Years	5 Years
STANDARDS	ETL Certified	ETL Certified



X-Light Series

X-Light series provides a quick and convenient installation method, and the solution of the edge of architecture lighting, and makes a big breakthrough in the use and design. 1.4 inch (35mm) of the light-emitting surface the size to achieve the ultimate with square and circular light emission effect, up 1120 to 1750 lumens. This versatile solution with integrated PoE Scheme, TRIAC/ELV and 0-10V drivers can keep up with the fast-paced and ever-changing nature of your projects.





PERFORMANCE

High Performance Precise lighting control deliver optical with complete absence of glare, balancing occupant comfort with high performance and value.

Beam Spread

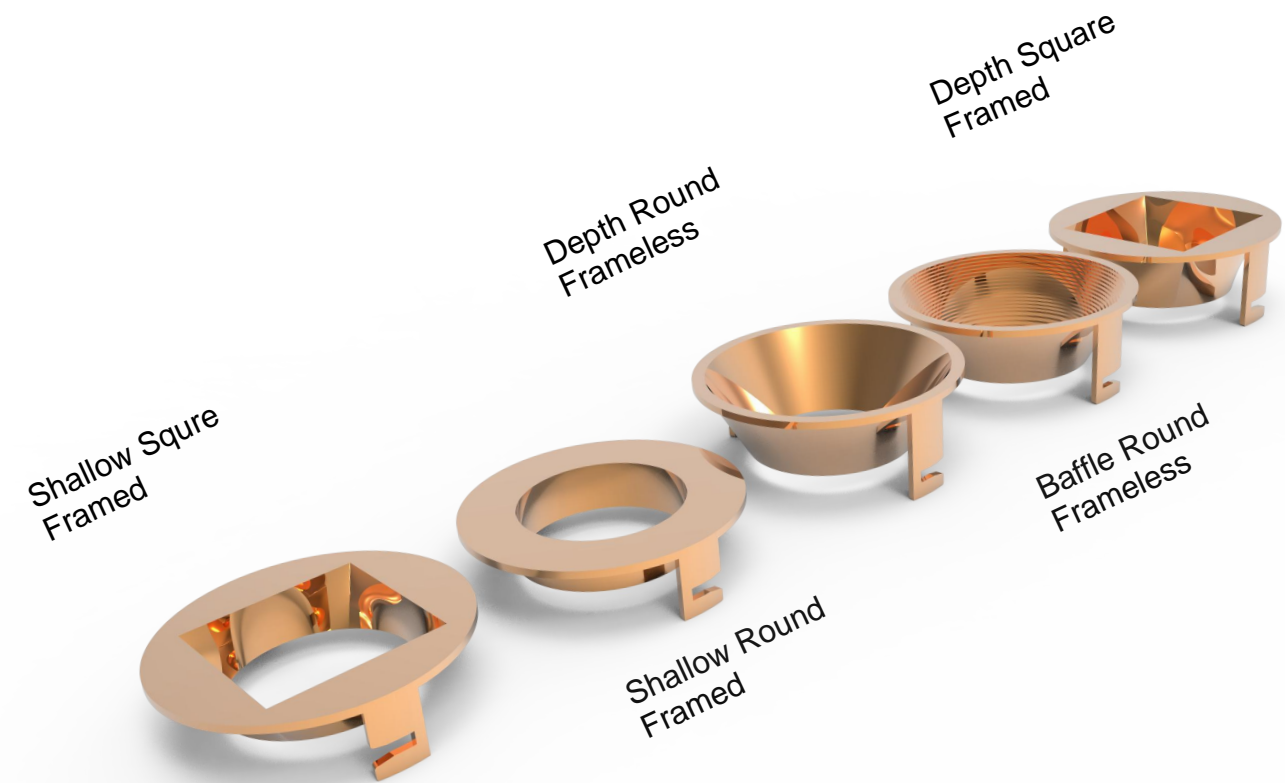
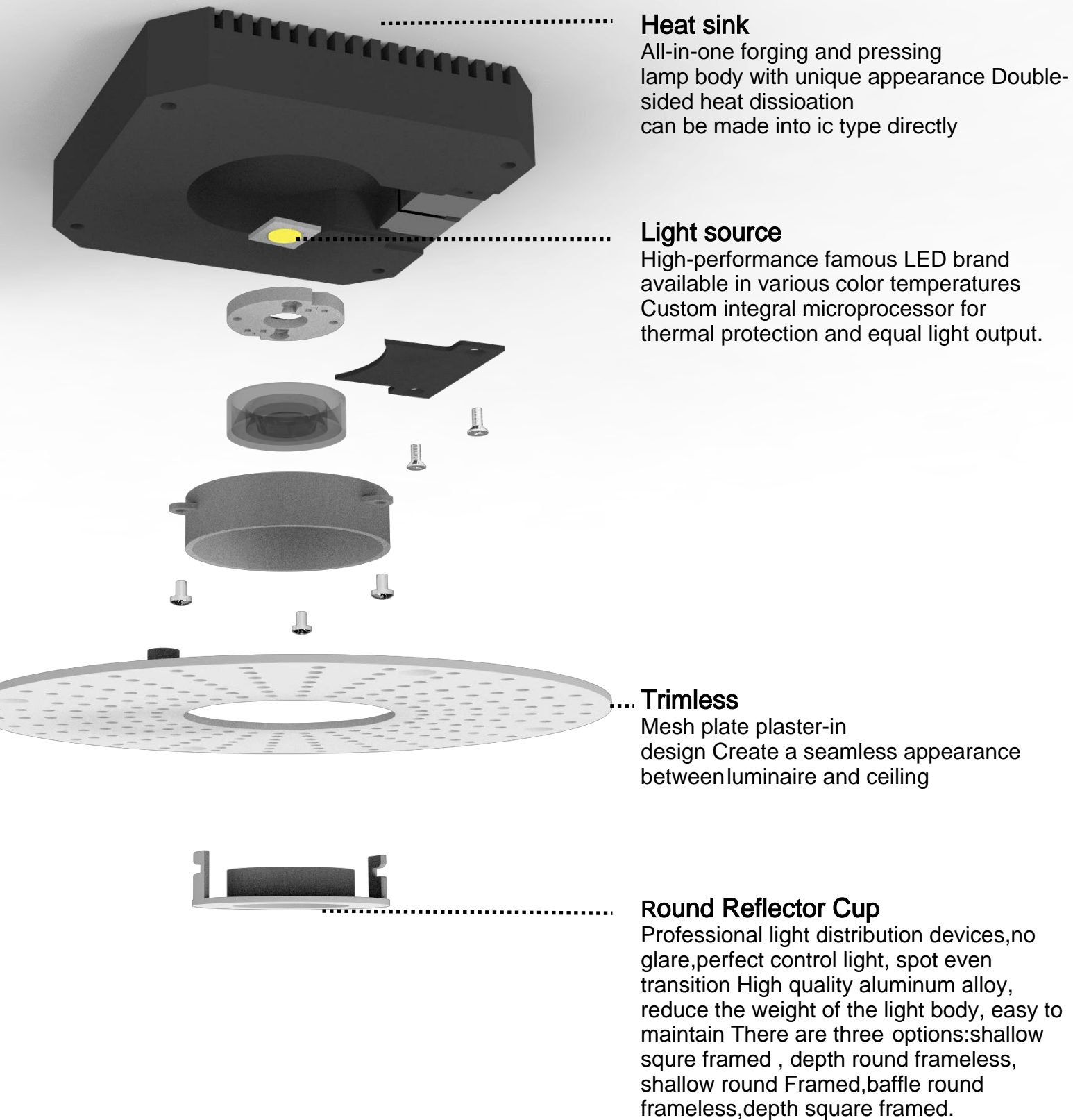


Spot

Narrow Flood

Flood

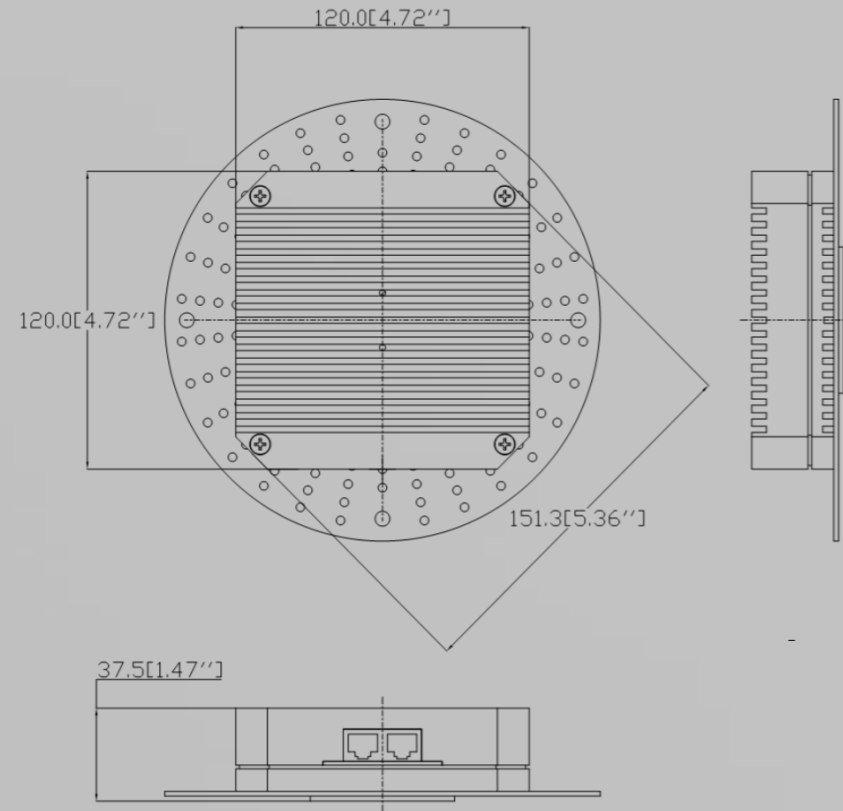
DESIGN



OPTIC OPTION

X-LIGHT

X-LIGHT - -A

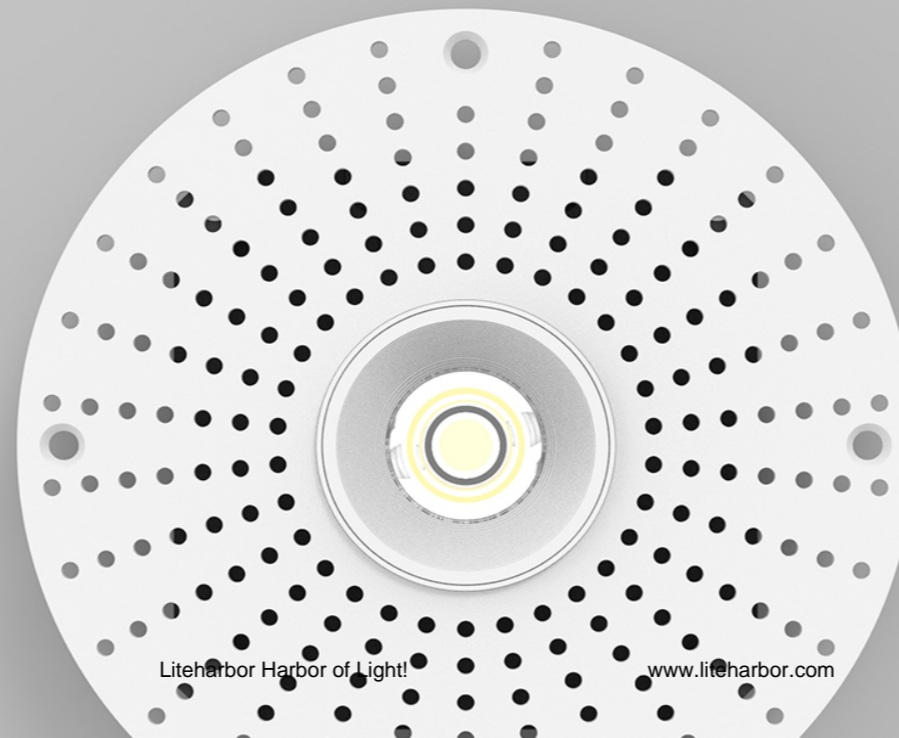


Lamp Body

- Ultra thin, the height of the whole lamp is only 37.5mm .
- All-in-one die casting lamp body with unique appearance .
- Ultra small light emitting surface, only 1.83 inch (46.47mm).
- Double-sided heat dissipation, can be made into IC type directly
- The anti-pull device is hidden inside the lamp body.

Electrical Specifications

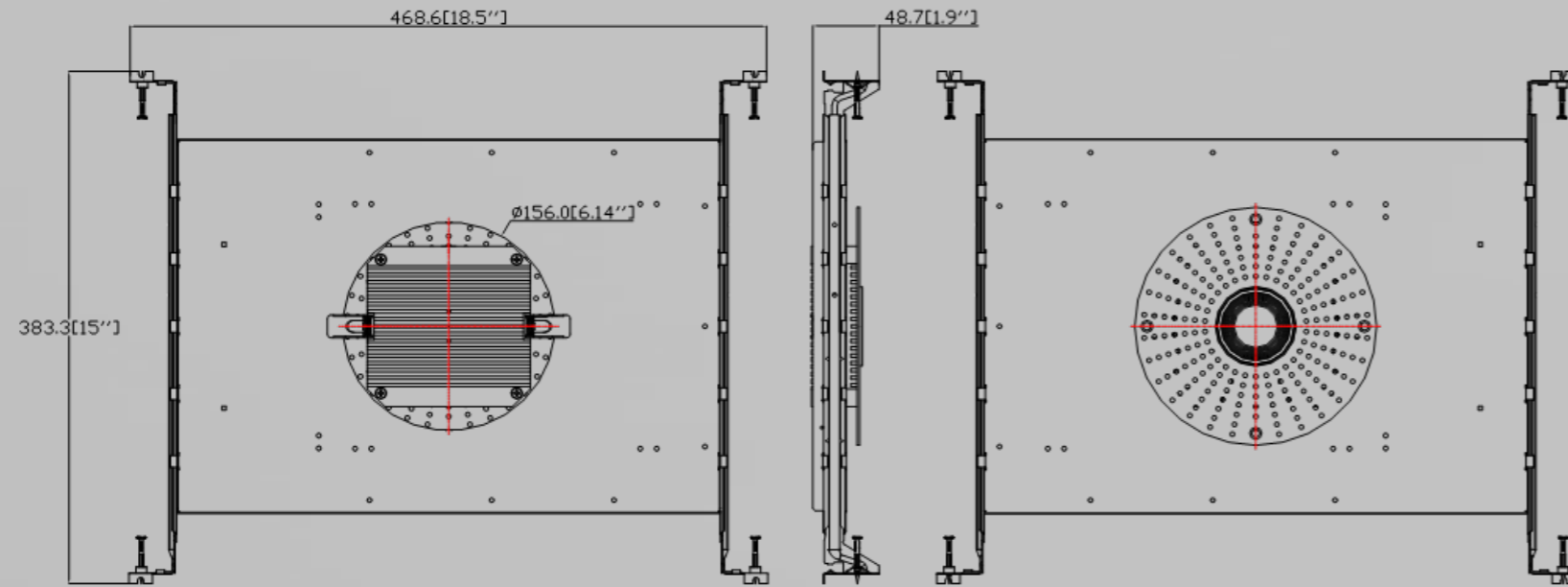
- Wide voltage input 120-277VAC, 50/60 Hz, 0-10V dimming, constant voltage and constant current mode.
- The power has UL listed, can be applied to a variety of applications.
- Integrated power supply, easy to replace the power supply.
- The POE scheme input voltage of 24V, the load termin can be used independently.
- Each luminaire is connected in parallel, one power supply can simultaneously control the use of five lamps.



Series	X-light- II - A
WATTAGE	25W Max
DELIVERED LUMENS	2100 lm
CRI	90+/97+
COLOR TEMPERATURE	3000K/4000K/5000K/6500K
WARM DIM	1800K~3000K
TUNABLE WHITE	2700K-6000K
LIGHT SOURCE	Replaceable
BEAM SPREAD	24° / 38° / 45°
TRIM OPTIONS	(SSF) Shallow square framed , (DRFL) Depth round frameless, (SRF) Shallow round framed, (BRFL) Baffle round frameless, (DSF) Depth square framed.
CONSTRUCTION	New Construction
INPUT VOLTAGE	120-277VAC/ DC 24V
DIMMING	0-10V Dimming / Tunable White / DMX512
FREQUENCY	50/60 Hz
RATINGS	Wet Location / Damp Location
APPLIED CEILING TYPE	Wooden Ceiling
LIFETIME	50000Hours
WARRANTY	5 Years
STANDARDS	ETL Certified

X-LIGHT

X-LIGHT - -ANC

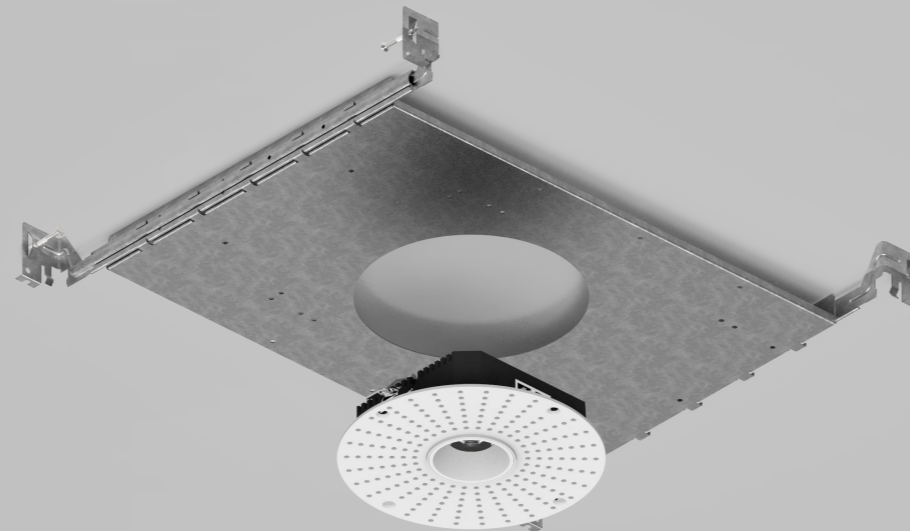


Lamp Body

- Ultra thin, the height of the whole lamp is only 37.5mm .
- All-in-one die casting lamp body with unique appearance
- Ultra small light emitting surface, only 1.83 inch (46.47mm).
- Double-sided heat dissipation, can be made into IC type directly.
- The anti-pull device is hidden inside the lamp body.

Electrical Specifications

- Wide voltage input 120-277VAC, 50/60 Hz, 0-10V dimming, constant voltage and constant current mode.
- The power has UL listed, can be applied to a variety of applications.
- Integrated power supply, easy to replace the power supply.
- The PoE scheme input voltage of 24V, the load termin can be used independently.
- Each luminaire is connected in parallel, one power supply can simultaneously control the use of five lamps.



Series	X-light- II - ANC
WATTAGE	25W Max
DELIVERED LUMENS	1750 lm
CRI	90+/97+
COLOR TEMPERATURE	3000K/4000K/5000K/6500K
WARM DIM	1800K~3000K
TUNABLE WHITE	2700K-6000K
LIGHT SOURCE	Replaceable
BEAM SPREAD	24° / 38° / 45°
TRIM OPTIONS	(SSF) Shallow square framed , (DRFL) Depth round frameless, (SRF) Shallow round framed, (BRFL) Baffle round frameless, (DSF) Depth square framed.
CONSTRUCTION	Remodel / New Construction
INPUT VOLTAGE	120-277V AC / DC 24V
DIMMING	0-10V Dimming / Tunable White / DMX512
FREQUENCY	50/60 Hz
RATINGS	Wet Location / Damp Location
APPLIED CEILING TYPE	Wooden Ceiling /Gypsum ceiling Plaster Ceiling
LIFETIME	50000Hours
WARRANTY	5 Years
STANDARDS	ETL Certified

X-LIGHT

X-LIGHT - -AGC



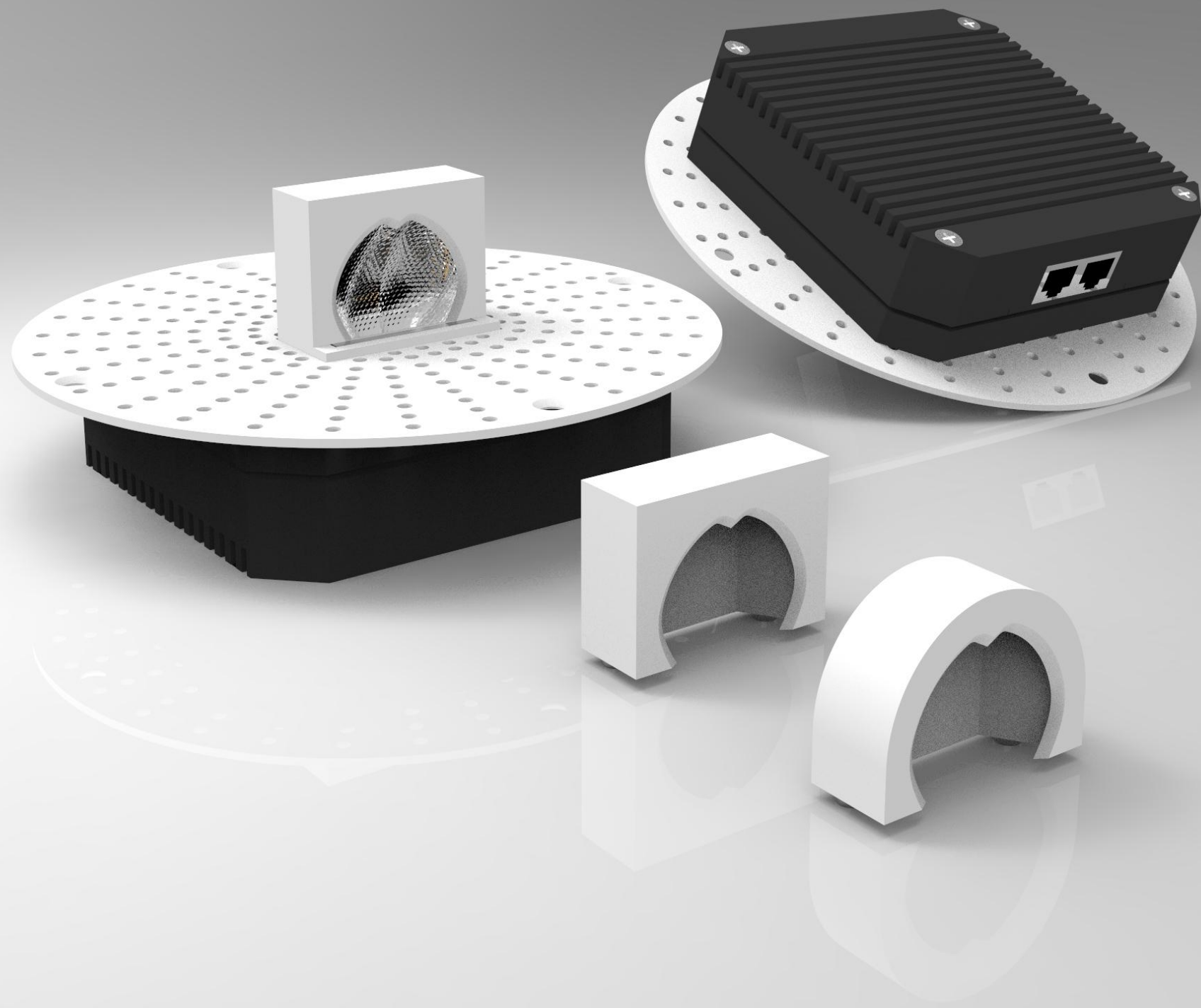
Lamp Body

- Ultra thin, the height of the whole lamp is only 37.5mm .
- All-in-one die casting lamp body with unique appearance
- Ultra small light emitting surface, only 1.83 inch (46.47mm).
- Double-sided heat dissipation, can be made into IC type directly.
- The anti-pull device is hidden inside the lamp body.

Electrical Specifications

- Wide voltage input 120-277VAC, 50/60 Hz, 0-10V dimming, constant voltage and constant current mode.
- The power has UL listed, can be applied to a variety of applications.
- Integrated power supply, easy to replace the power supply.
- The PoE scheme input voltage of 24V, the load termin can be used independently.
- Each luminaire is connected in parallel, one power supply can simultaneously control the use of five lamps.

Series	X-light- II - AGC
WATTAGE	25W Max
DELIVERED LUMENS	1750 lm
CRI	90+/97+
COLOR TEMPERATURE	3000K/4000K/5000K/6500K
WARM DIM	1800K~3000K
TUNABLE WHITE	2700K-6000K
LIGHT SOURCE	Replaceable
BEAM SPREAD	24° / 38° / 45°
TRIM OPTIONS	(SSF) Shallow square framed , (DRFL) Depth round frameless, (SRF) Shallow round framed, (BRFL) Baffle round frameless, (DSF) Depth square framed.
CONSTRUCTION	Remodel / New Construction
INPUT VOLTAGE	120-277V AC / DC 24V
DIMMING	0-10V Dimming / Tunable White / DMX512
FREQUENCY	50/60 Hz
RATINGS	Wet Location / Damp Location
APPLIED CEILING TYPE	Wooden Ceiling /Gypsum ceiling Plaster Ceiling
LIFETIME	50000Hours
WARRANTY	5 Years
STANDARDS	ETL Certified



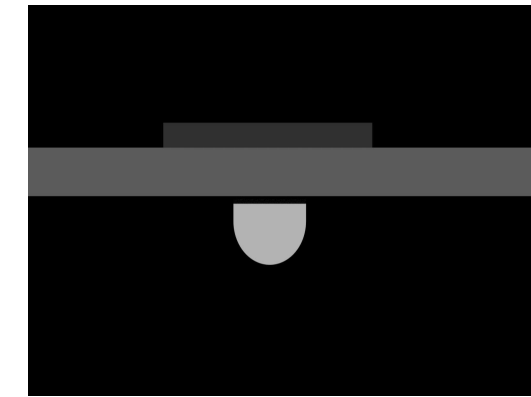
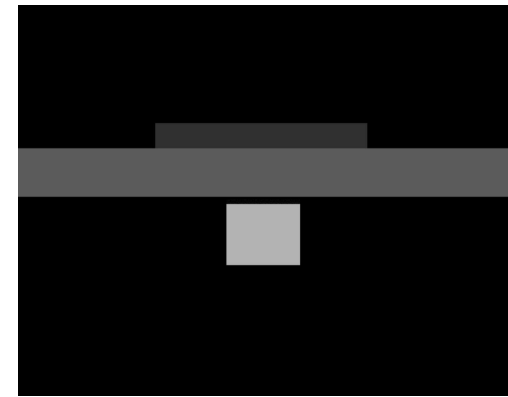
X-Light Series

X-Light III series recessed downlight offers small aperture lighting without compromise and embraces a spoon-reflector that sits invisibly in a semi-recessed square. Specification grade fixed parts come in half round or square, CCT's and CRI options. Curated for discreet, yet impressive projection. The design flawlessly illuminates walls and works of art. It features a highly configurable single point source LED package and is capable of delivering up to 1500 lumens.





PERFORMANCE



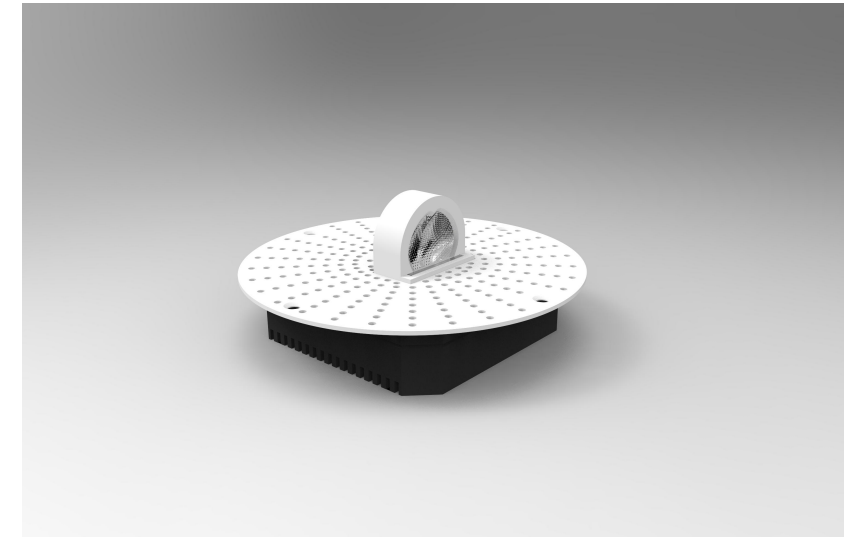
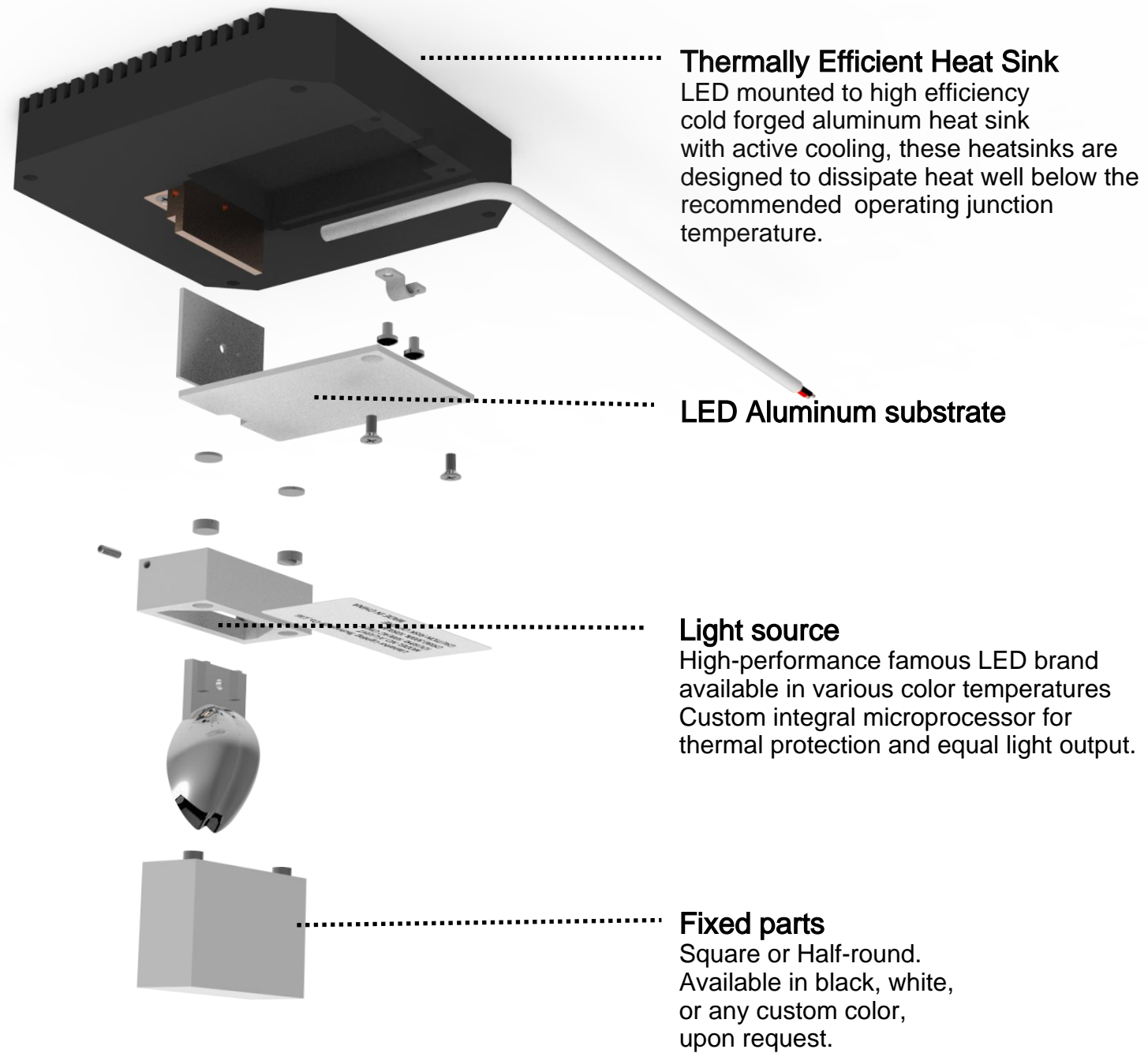
Curated for discreet, yet impressive projection, the shape of the spoon-reflector follows any given architectural line and becomes an integral part of the overall design aesthetic.

Features

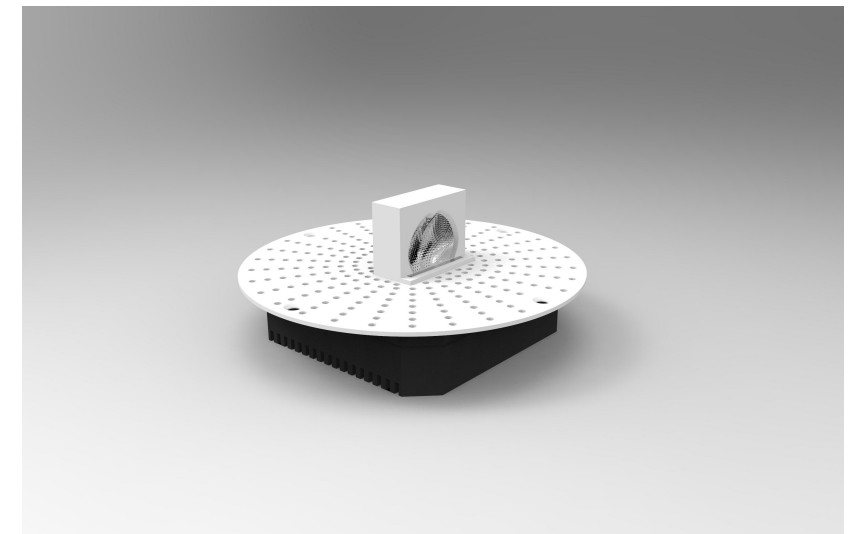
- X-Light III with square and half-round fixed parts.
- Use big brand COB light source with high luminous efficiency and long service life (50000 hours).
- Professional light distribution devices, no glare, perfect control light, spot even transition.



DESIGN



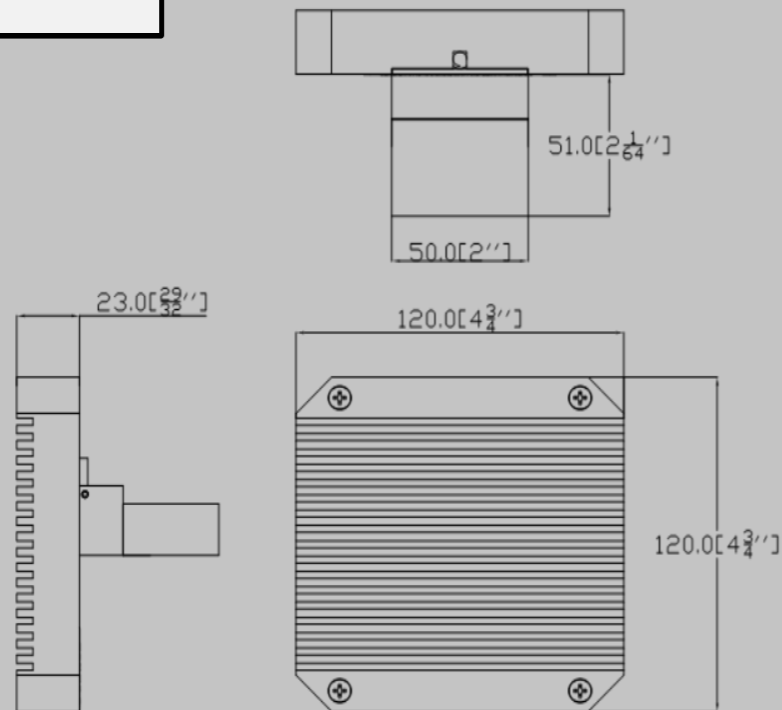
Half-round



Square

X-LIGHT

X-LIGHT -A

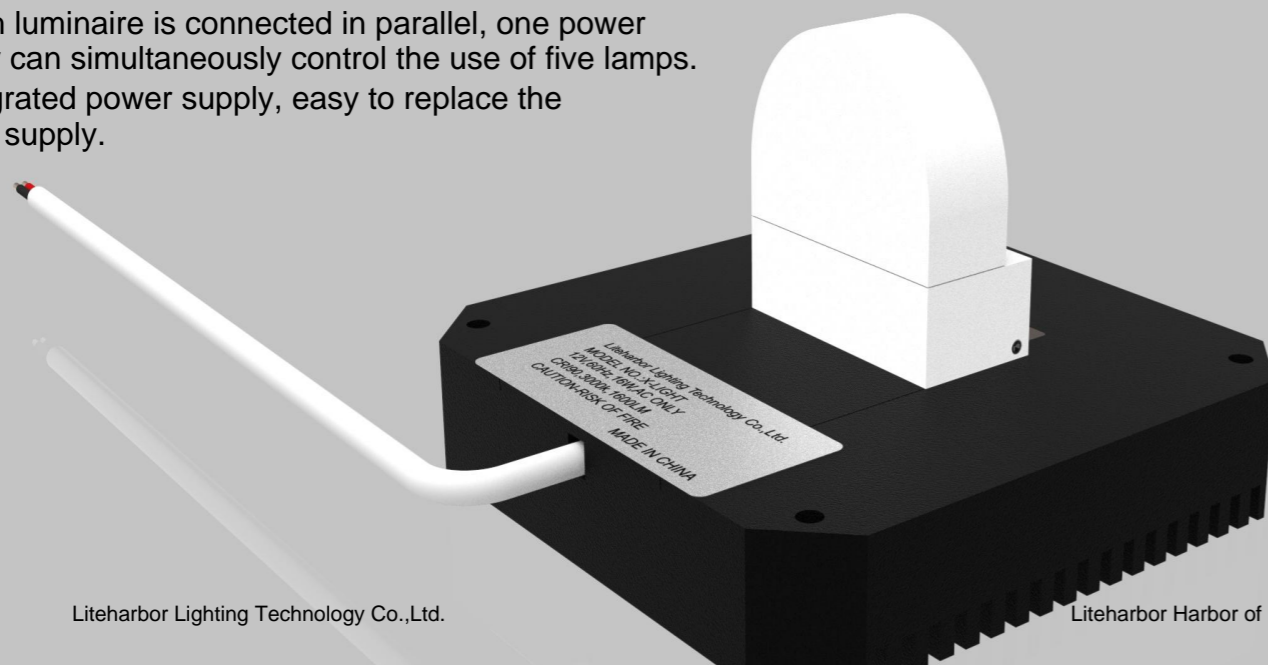


Lamp Body

- 1400lm source light output.
- The anti-pull device is hidden inside the lamp body.
- Color rendering index 90.
- High performance big brand LED at various color temperatures available.

Electrical Specifications

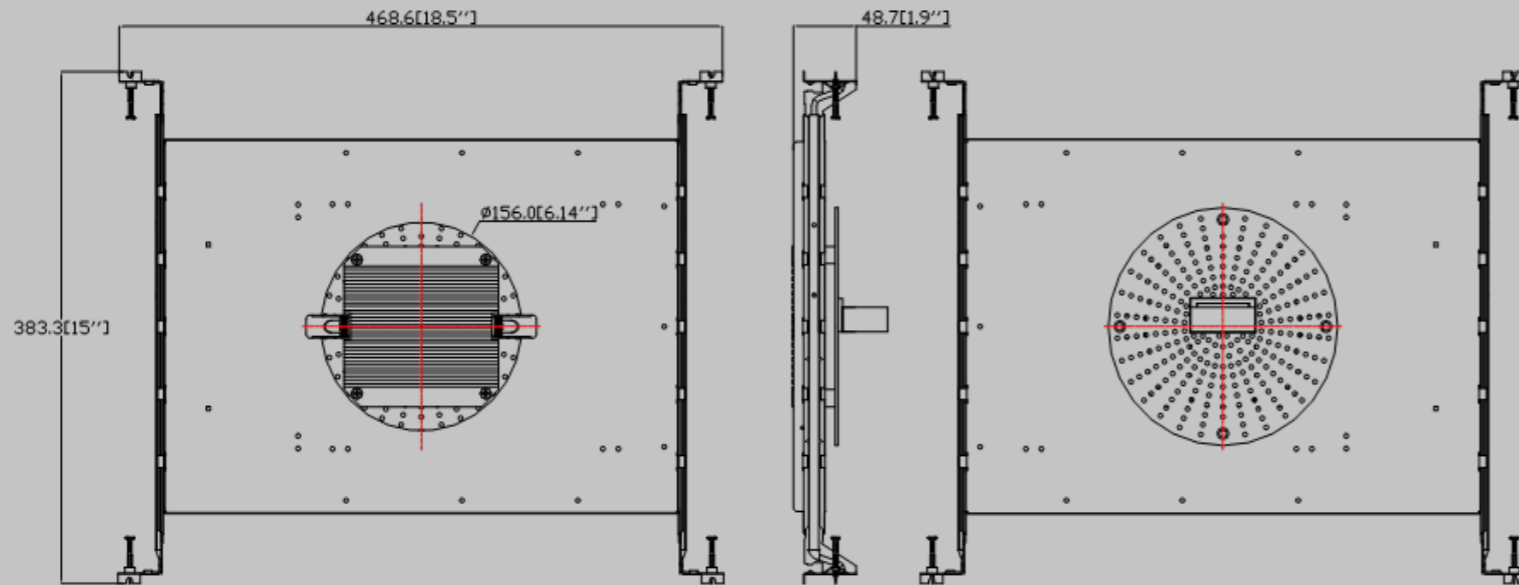
- 16W Power consumption. Wide voltage input 120-277VAC, 50/60 Hz, 0-10V dimming constant voltage and constant current mode.
- The POE scheme input voltage of 42V/24V, the load termin can be used independently.
- Hard anodized aircraft grade aluminum heat sink.
- Operating Temperature:-10 -50 Light output.
- Each luminaire is connected in parallel, one power supply can simultaneously control the use of five lamps.
- Integrated power supply, easy to replace the power supply.



X-light III	X-light-III- A
WATTAGE	16W Max
DELIVERED LUMENS	1400 lm
CRI	90+/97+
COLOR TEMPERATURE	3000K/4000K/5000K/6500K
WARM DIM	1800K~3000K
TUNABLE WHITE	2700K-6000K
LIGHT SOURCE	Replaceable
BEAM SPREAD	50°
TRIM OPTIONS	(HR)Half-round (S)Square
CONSTRUCTION	New construction
INPUT VOLTAGE	120-277V AC / DC 42V / DC 24V
DIMMING	0-10V Dimming / Tunable White / DMX512
FREQUENCY	50/60 Hz
RATINGS	Wet Location / Damp Location
APPLIED CEILING TYPE	Wooden Ceiling
LIFETIME	50000Hours
WARRANTY	5 Years
STANDARDS	ETL Certified

X-LIGHT

X-LIGHT- -ANC



Lamp Body

- 1400lm source light output.
- The anti-pull device is hidden inside the lamp body.
- Color rendering index 90.
- High performance big brand LED at various color temperatures available.

Electrical Specifications

- 16W Power consumption. Wide voltage input 120-277VAC, 50/60 Hz, 0-10V dimming constant voltage and constant current mode.
- The POE scheme input voltage of 42V/24V, the load termin can be used independently.
- Hard anodized aircraft grade aluminum heat sink.
- Operating Temperature:-10 -50 Light output.
- Each luminaire is connected in parallel, one power supply can simultaneously control the use of five lamps.
- Integrated power supply, easy to replace the power supply.



X-light III	X-light-III- ANC
WATTAGE	16W Max
DELIVERED LUMENS	1400 lm
CRI	90+/97+
COLOR TEMPERATURE	3000K/4000K/5000K/6500K
WARM DIM	1800K~3000K
TUNABLE WHITE	2700K-6000K
LIGHT SOURCE	Replaceable
BEAM SPREAD	50°
TRIM OPTIONS	(HR)Half-round (S)Square
CONSTRUCTION	Remodel / New Construction
INPUT VOLTAGE	120-277V AC / DC 42V / DC 24V
DIMMING	0-10V Dimming / Tunable White / DMX512
FREQUENCY	50/60 Hz
RATINGS	Wet Location / Damp Location
APPLIED CEILING TYPE	Wooden Ceiling /Gypsum ceiling Plaster Ceiling
LIFETIME	50000Hours
WARRANTY	5 Years
STANDARDS	ETL Certified

X-LIGHT

X-LIGHT- -AGC



Lamp Body

- 1400lm source light output.
- The anti-pull device is hidden inside the lamp body.
- Color rendering index 90.
- High performance big brand LED at various color temperatures available.

Electrical Specifications

- 16W Power consumption. Wide voltage input 120-277VAC, 50/60 Hz, 0-10V dimming constant voltage and constant current mode.
- The POE scheme input voltage of 42V/24V, the load termin can be used independently.
- Hard anodized aircraft grade aluminum heat sink.
- Operating Temperature: -10 -50 Light output.
- Each luminaire is connected in parallel, one power supply can simultaneously control the use of five lamps.
- Integrated power supply, easy to replace the power supply.

X-light III	X-light-III- AGC
WATTAGE	16W Max
DELIVERED LUMENS	1400 lm
CRI	90+/97+
COLOR TEMPERATURE	3000K/4000K/5000K/6500K
WARM DIM	1800K~3000K
TUNABLE WHITE	2700K-6000K
LIGHT SOURCE	Replaceable
BEAM SPREAD	50°
TRIM OPTIONS	(HR)Half-round (S)Square
CONSTRUCTION	Remodel / New Construction
INPUT VOLTAGE	120-277V AC / DC 42V / DC 24V
DIMMING	0-10V Dimming / Tunable White / DMX512
FREQUENCY	50/60 Hz
RATINGS	Wet Location / Damp Location
APPLIED CEILING TYPE	Wooden Ceiling /Gypsum ceiling Plaster Ceiling
LIFETIME	50000Hours
WARRANTY	5 Years
STANDARDS	ETL Certified

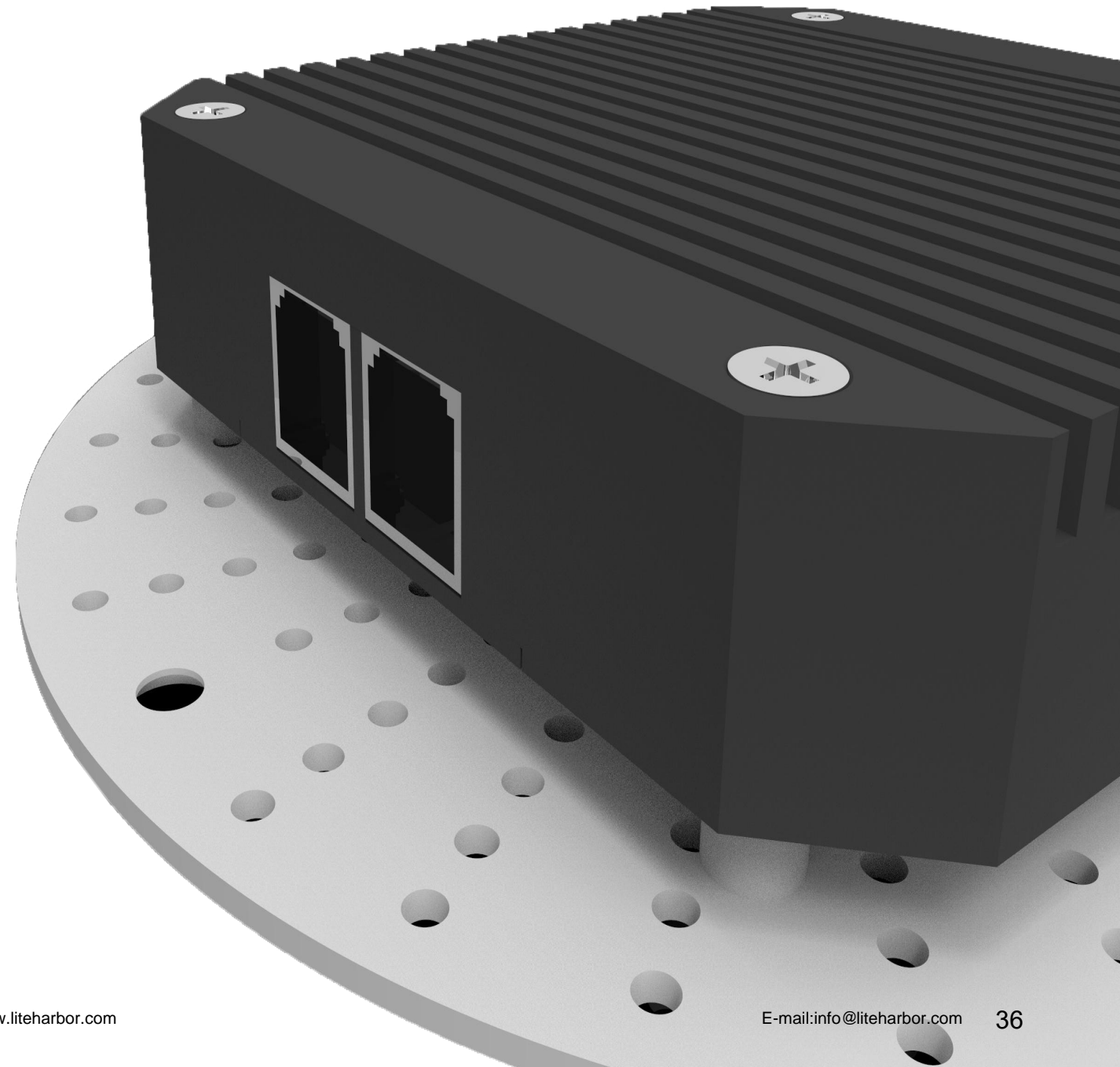
POE LIGHTING

Power over Ethernet (PoE) is a standard for passing electrical power and data through a network cable, thus eliminating the need for a separate power supply and AC outlet to power connected devices.

—Since 2003, it has been used in devices, such as cameras and phones. In 2018, however, the technology advanced to allow for a more substantial wattage load (90W), making it an increasingly appealing and beneficial option for entire building systems, including lighting.

The digital age has led to the adoption of smart technology that facilitates today' s building management and future-proofs buildings for tomorrow' s developments.PoE networks are becoming a mechanism to improve overall building efficiencies and maximize energy savings in new construction or remodel projects.

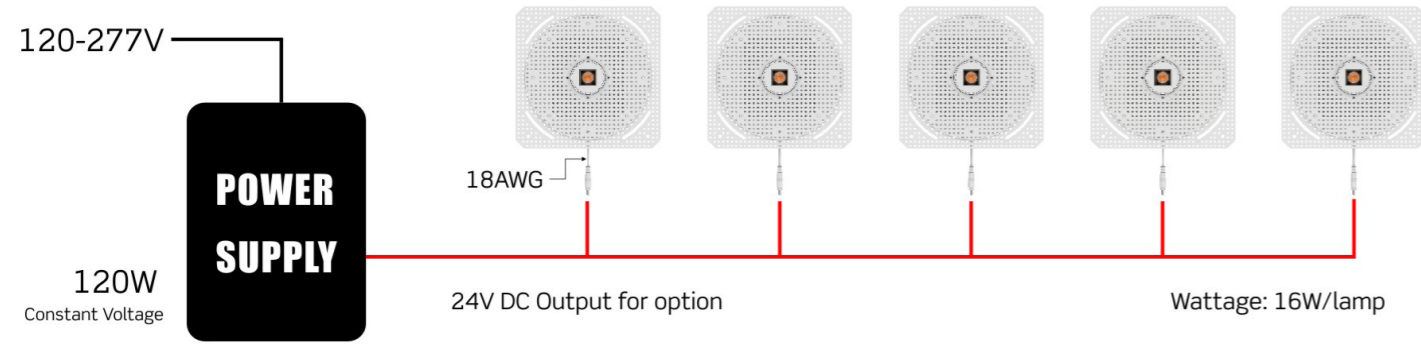
Power over Ethernet (PoE) technology provides low voltage power and data connection to LED luminaires through standard Ethernet cables, facilitating their incorporation into smart building management systems.



Wiring Diagram

Integrated power supply

Each luminaire is connected in parallel, one power supply can simultaneously control the use of **Five** lamps. The input voltage of each lamp is 24V, the load termin can be used independently.



Line Pressure Drop Reference Table

Standard line length Option: 1.5m, 2.5m, 5m, 10m or free combination

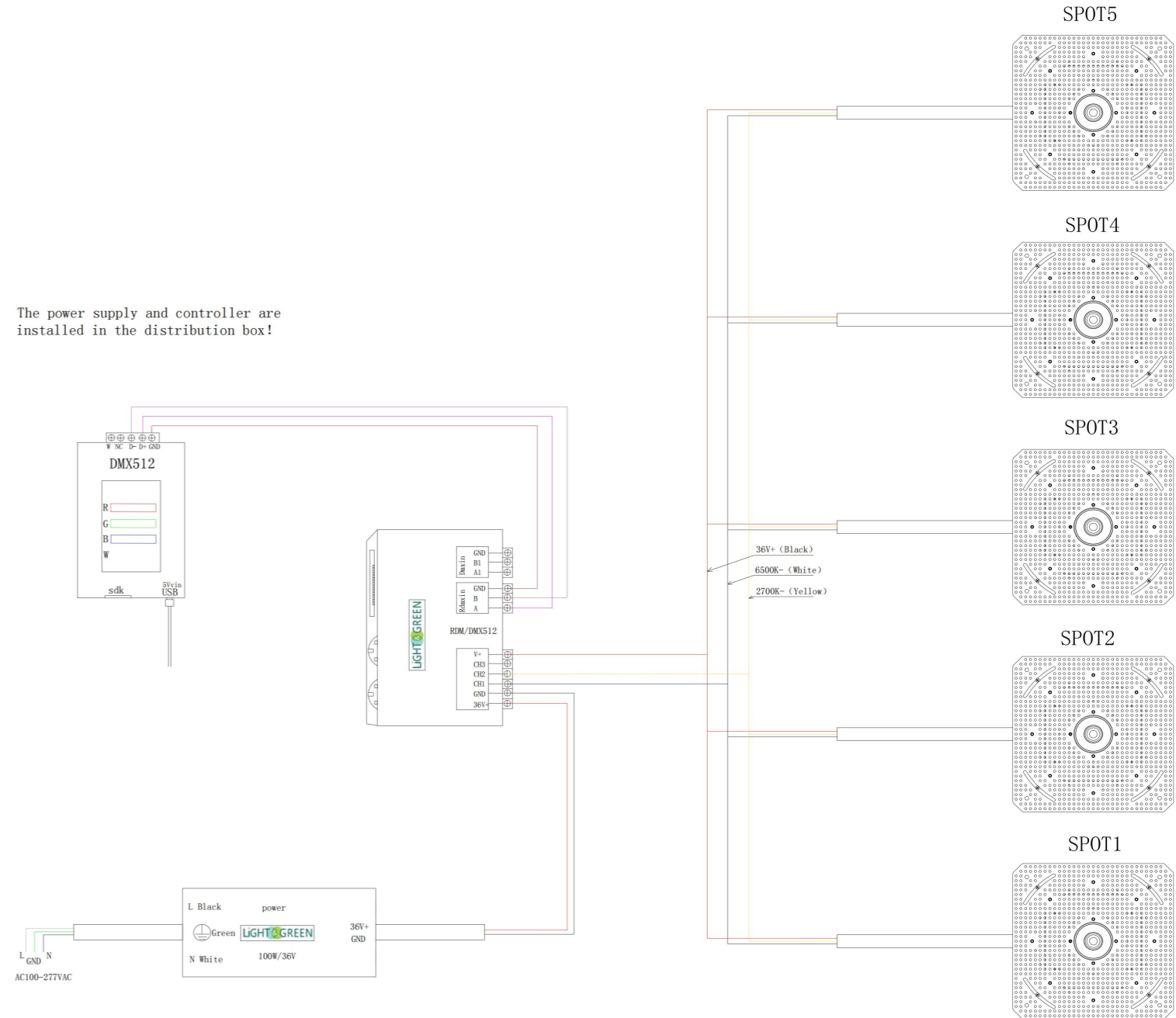
What is the maximum wiring distance allowed between the lighting load? It depends on the wire.

Power(W)	Voltage(V)	American wire gage(AWG)	Line length(M)	IP-drop(V)
16W	24V DC	20	≤75	≤5%
		18	≤120	
		16	≤200	
		14	≤300	

Drive power supply output line voltage drop reference table (U_{out}=24V P_{lamp}=16W Voltage drop ≤5)

DMX512

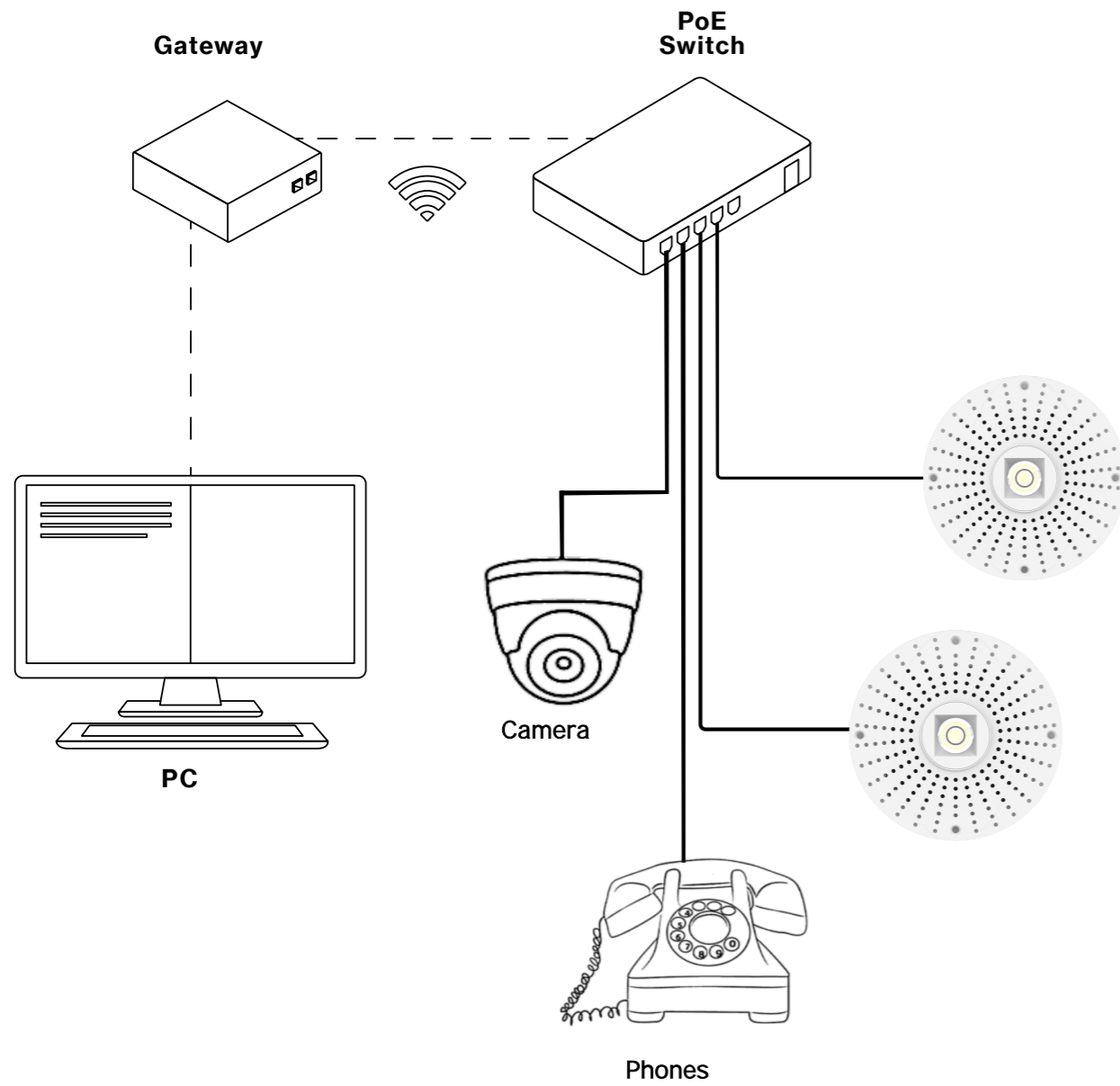
The power supply and controller are installed in the distribution box!



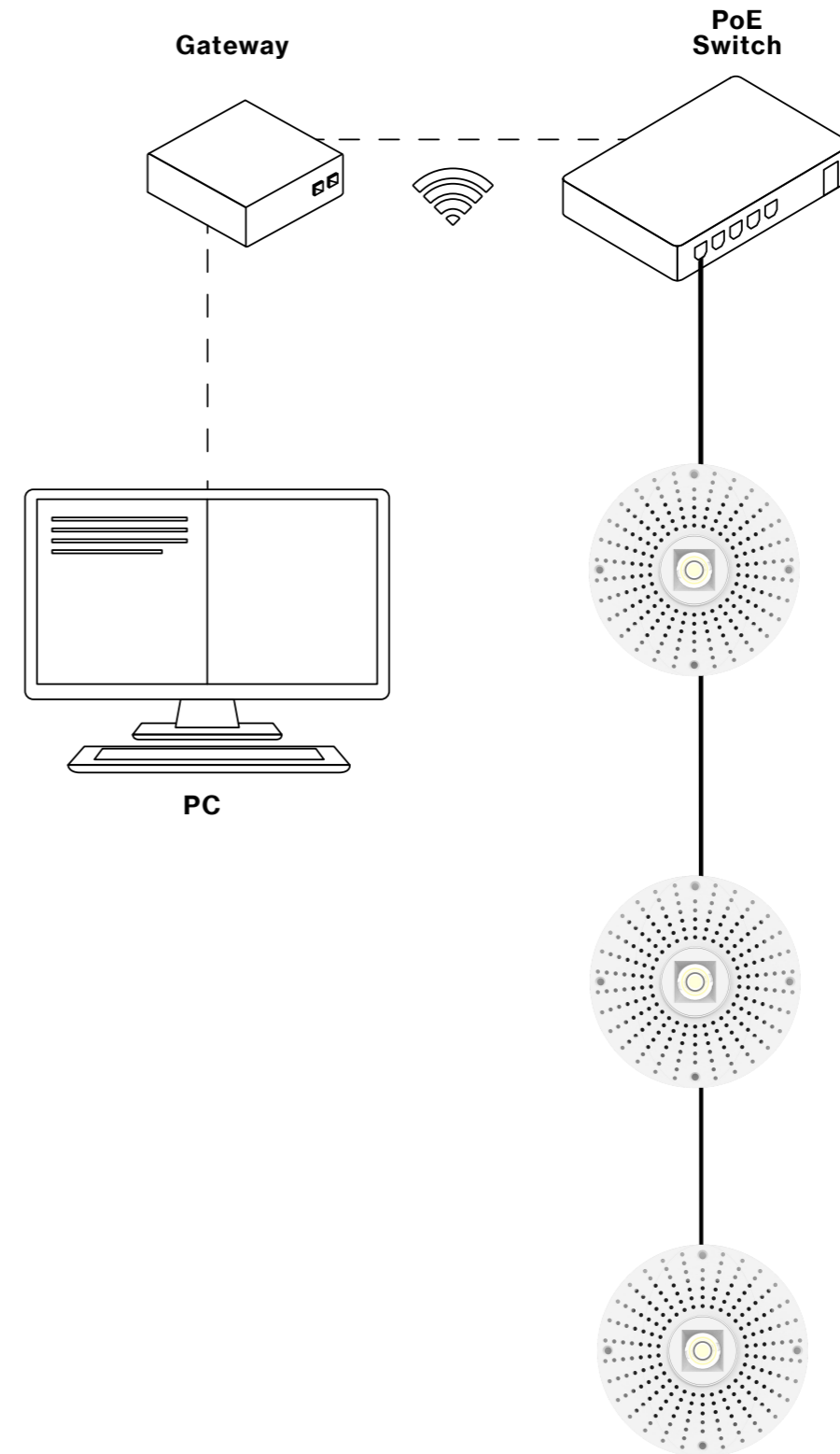
Wiring Diagram

Power over Ethernet

A Scheme



B Scheme



Power over Ethernet

PoE lighting uses Power over Ethernet technology to connect, monitor, and control LED light fixtures used in smart building solutions. Smart PoE lighting reduces installation and operating costs by more than half and helps building owners meet wellness and sustainability goals. Since the low voltage PoE system does not require shielded cables, conduit runs are eliminated early in the construction process.

Advantages of PoE

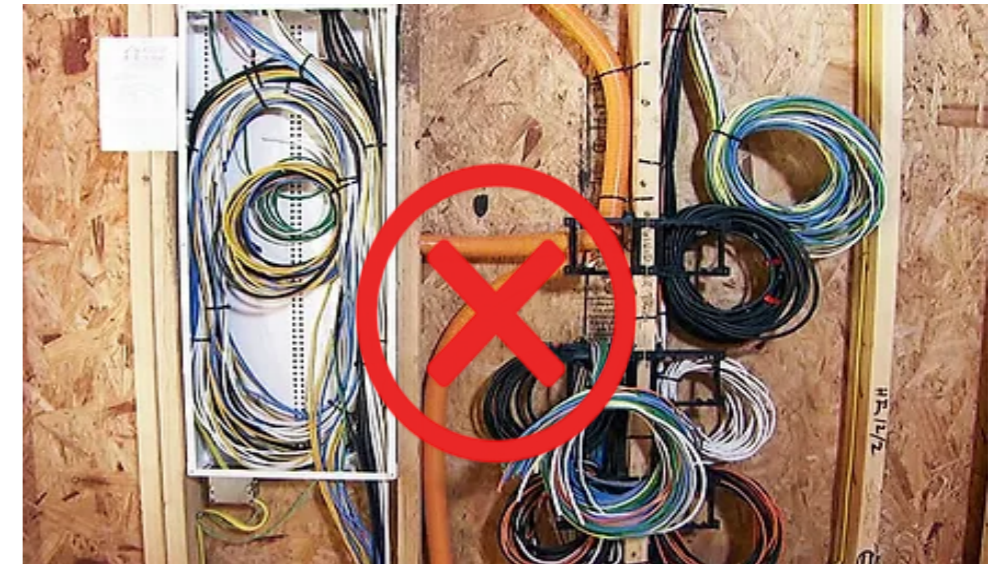
The primary advantage of power over ethernet is the delivery of data and power over one Cat5 or Cat6 ethernet cable. Remote installation generally costs less than optical fiber and does not require a qualified electrician, saving building owners valuable time and labor costs.

Top PoE benefits include:

- Further Cost Savings
- Easy, Low-Voltage Installation
- Helps future-proof buildings
- Enhanced Flexibility and Control
- Enables software control integration
- Social Benefits
- Robust, Secure and Reliable

Why use PoE Lighting

One of the biggest advantages of PoE technology is cost savings. PoE installation is cheaper than traditional electrical work, operating costs are lower over the course of the PoE lifetime and data can inform further decisions to save costs — all without sacrificing lighting quality for occupants.



70% Cost Saving



X-Light

ORDERING GUIDE

(EXAMPLE: X-Light- -A-C1-16W-U-0-10V)

Electrical Specifications					
FAMILY	SCHEME	WATTAGE	VOLTAGE	LED DIMMING DRIVER	
<input type="checkbox"/> X-Light- -A	<input type="checkbox"/> C1 one by one driver	<input type="checkbox"/> 16W max	<input type="checkbox"/> U AC 120V-277V	<input type="checkbox"/> 0-10V (Universal Driver: 0-10V,120V/277V)	
<input type="checkbox"/> X-Light- -B	<input type="checkbox"/> C5 Integrated power supply		<input type="checkbox"/> 24V 24V DC	<input type="checkbox"/> DMX512	
<input type="checkbox"/> X-Light- -C	<input type="checkbox"/> POE RJ45 adaptor				
LED PERFORMANCE		OPTIC AND MEDIA	HOUSING BASE		
CRI	CCT	OPTIC	TRIM SHAPE	FINISH	TRIM STYLE
<input type="checkbox"/> 80 (80 CRI)	<input type="checkbox"/> 27 (2700K)	<input type="checkbox"/> 36 (36° Narrow Flood)	<input type="checkbox"/> R(Round)	<input type="checkbox"/> BK (Black)	<input type="checkbox"/> ST (Standard)
<input type="checkbox"/> 90 (90 CRI)	<input type="checkbox"/> 30 (3000K)		<input type="checkbox"/> S(Square)	<input type="checkbox"/> WH (White)	<input type="checkbox"/> TL (Trimless)
<input type="checkbox"/> 97 (97 CRI)	<input type="checkbox"/> 35 (3500K)			<input type="checkbox"/> GY (Grey)	
	<input type="checkbox"/> 40 (4000K)				
	<input type="checkbox"/> 50 (5000K)				
	<input type="checkbox"/> TW (2700K-6000K)				
	<input type="checkbox"/> WD*(1800K~3000K)				

(EXAMPLE: X-Light- -A-C1-16W-U-0-10V)

Electrical Specifications					
FAMILY	SCHEME	WATTAGE	VOLTAGE	LED DIMMING DRIVER	
<input type="checkbox"/> X-Light- -A	<input type="checkbox"/> C1 one by one driver	<input type="checkbox"/> 16W	<input type="checkbox"/> U AC 120V-277V	<input type="checkbox"/> 0-10V (Universal Driver: 0-10V,120V/277V)	
<input type="checkbox"/> X-Light- -ANC	<input type="checkbox"/> C5 Integrated power supply		<input type="checkbox"/> 24V 24V DC	<input type="checkbox"/> DMX512	
<input type="checkbox"/> X-Light- -AGC	<input type="checkbox"/> POE RJ45 adaptor		<input type="checkbox"/> 42V 42V DC		
LED PERFORMANCE		OPTIC AND MEDIA	HOUSING BASE		
CRI	CCT	OPTIC	FINISH	TRIM SHAPE	
<input type="checkbox"/> 90 (90 CRI)	<input type="checkbox"/> 27 (2700K)	<input type="checkbox"/> 50 (50° Flood)	<input type="checkbox"/> BK (Black)	<input type="checkbox"/> (HR) Half-round	
<input type="checkbox"/> 97 (97 CRI)	<input type="checkbox"/> 30 (3000K)		<input type="checkbox"/> WH (White)	<input type="checkbox"/> (S) Square	
	<input type="checkbox"/> 35 (3500K)		<input type="checkbox"/> GY (Grey)		
	<input type="checkbox"/> 40 (4000K)				
	<input type="checkbox"/> 50 (5000K)				
	<input type="checkbox"/> TW (2700K-6000K)				
	<input type="checkbox"/> WD*(1800K~3000K)				

(EXAMPLE: X-Light- -A-C1-25W-U-0-10V)

Electrical Specifications					
FAMILY	SCHEME	WATTAGE	VOLTAGE	LED DIMMING DRIVER	
<input type="checkbox"/> X-Light- -A	<input type="checkbox"/> C1 one by one driver	<input type="checkbox"/> 16W	<input type="checkbox"/> U AC 120V-277V	<input type="checkbox"/> 0-10V (Universal Driver: 0-10V,120V/277V)	
<input type="checkbox"/> X-Light- -ANC	<input type="checkbox"/> C5 Integrated power supply	<input type="checkbox"/> 20W	<input type="checkbox"/> 24V 24V DC	<input type="checkbox"/> DMX512	
<input type="checkbox"/> X-Light- -AGC	<input type="checkbox"/> POE RJ45 adaptor	<input type="checkbox"/> 25W max			
LED PERFORMANCE		OPTIC AND MEDIA	HOUSING BASE		
CRI	CCT	OPTIC	FINISH	TRIM SHAPE	
<input type="checkbox"/> 90 (90 CRI)	<input type="checkbox"/> 27 (2700K)	<input type="checkbox"/> 24 (24° Spot)	<input type="checkbox"/> BK (Black)	<input type="checkbox"/> (SSF) Shallow square framed ,	
<input type="checkbox"/> 97 (97 CRI)	<input type="checkbox"/> 30 (3000K)	<input type="checkbox"/> 38(36° Narrow Flood)	<input type="checkbox"/> WH (White)	<input type="checkbox"/> (DRFL) Depth round frameless,	
	<input type="checkbox"/> 35 (3500K)	<input type="checkbox"/> 45 (40° Flood)	<input type="checkbox"/> GY (Grey)	<input type="checkbox"/> (SRF) Shallow round framed,	
	<input type="checkbox"/> 40 (4000K)			<input type="checkbox"/> (BRFL) Baffle round frameless,	
	<input type="checkbox"/> 50 (5000K)			<input type="checkbox"/> (DSF) Depth square framed.	
	<input type="checkbox"/> TW (2700K-6000K)				
	<input type="checkbox"/> WD*(1800K~3000K)				